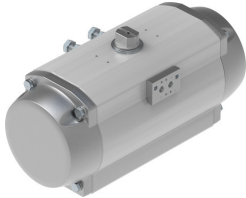


Quarter turn actuator DFPD-N-900-RP-90-RS60-F1012-R3-EP

Part number: 8084141

FESTO



Data sheet

| Feature | Value |
|--|--|
| Size of valve actuator | 900 |
| Operating pressure | 0.2 MPa ... 0.8 MPa |
| Nominal operating pressure | 87 psi |
| Nominal operating pressure | 0.6 MPa |
| Operating pressure | 29 psi ... 116 psi |
| Devices type according to VDMA 66413 | Safety device |
| Safety function | The fundamental safety function is that the control valve moves to the switching position when the compressed air is turned off. It is reset by spring force. |
| MTTFd | 1126 years |
| PFH | 1.01E-7 |
| Maritime classification | See certificate |
| Flange hole pattern | F1012 |
| Swivel angle | 90 deg |
| End-position adjusting range at 0° | -5 deg ... 5 deg |
| End-position adjusting range at nominal swivel angle | -5 deg ... 5 deg |
| Depth shaft connection | 29 mm |
| Type code | DFPD |
| Standard connection for valve | ISO 5211 |
| Mounting position | Any |
| Mode of operation | Single-acting |
| Design | Gear rack/pinion |
| Closing direction | Clockwise closing |
| Symbol | 00991266 |
| Valve connection conforms to standard | VDI/VDE 3845 (NAMUR) |
| Connection for valve positioner and position sensor conforms to standard | VDI/VDE 3845 size AA 3 |
| Safety integrity level (SIL) | Up to SIL 2 low demand mode up to SIL 3 in a redundant architecture up to SIL 1 high demand mode |
| Certified for safety function to ISO 13849 and IEC 61508 (SIL) | Product can be used in safety-related parts of control systems up to SIL 2, low demand Product can be used in safety-related parts of control systems up to SIL 1, high demand up to SIL 3 in a redundant architecture |
| Operating pressure | 2 bar ... 8 bar |
| Nominal operating pressure | 6 bar |
| ATEX category gas | II 2G |

| Feature | Value |
|---|---|
| Type of ignition protection for gas | Ex h IIC T4 Gb X |
| ATEX category for dust | II 2D |
| Type of (ignition) protection for dust | Ex h IIIC T105°C Db X |
| Explosive ambient temperature | -20°C ≤ Ta ≤ +80°C |
| Ambient temperature | -20 °C ... 80 °C |
| Certificate issuing authority | DNVGL TAP00001CE German Technical Control Board (TÜV) Rheinland 968/V 1106.00/19 |
| Explosion prevention and protection | Zone 1 (ATEX) Zone 2 (ATEX) Zone 21 (ATEX) Zone 22 (ATEX) |
| Operating medium | Compressed air as per ISO 8573-1:2010 [7:4:4] |
| Information on operating and pilot media | Dew point min. 10 °C below the ambient and medium temperature Operation with oil lubrication possible (required for further use) |
| CE marking (see declaration of conformity) | as per EU explosion protection directive (ATEX) |
| Corrosion resistance class (CRC) | 2 - Moderate corrosion stress |
| Storage temperature | -20 °C ... 60 °C |
| Torque at nominal operating pressure and 0° swivel angle | 593.5 Nm |
| Torque at nominal operating pressure and 90° swivel angle | 323.6 Nm |
| Note about the torque | The actuator's operating torque must not be higher than the maximum permissible torque listed in ISO 5211, based on the size of the mounting flange and the coupling. |
| Spring return torque at 0° swivel angle | 325.1 Nm |
| Spring return torque with 90° swivel angle | 595 Nm |
| PFD | 7.8E-4 |
| Air consumption at 6 bar per cycle 0°-nominal swivel angle-0° | 31.5 l |
| Product weight | 30395 g |
| Shaft connection | T27 |
| Pneumatic connection | 1/4 NPT |
| Note on materials | RoHS-compliant |
| Material of sub-base | Wrought aluminum alloy, anodized |
| Cover material | Die-cast aluminum, coated |
| Seals material | NBR |
| Material of spring | Spring steel |
| Housing material | Wrought aluminum alloy, anodized |
| Material of piston | Die-cast aluminum |
| Material of bearing | POM |
| Cam material | Steel |
| Material of screws | High-alloy stainless steel |
| Shaft material | High-alloy stainless steel |