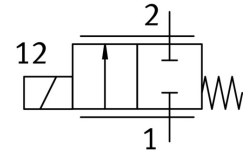


Proportional directional control valve VPWS-2.2-B-6-PC15-3-V

Part number: 8074074

FESTO



Data sheet

Feature	Value
Nominal width	2.2 mm
Note on degree of protection	IP65 with suitable plug In mounted state
Duty cycle	100% (operating current < 155 mA)
Electrical connection 1, connection type	Cable
Information on medium	Operation with oil lubrication not possible Maximum particle size 10 µm
Medium	Inert gas Air Oxygen
Electrical connection 1, connection technology	Open end
Coil resistance	60.5 Ohm
Max. electrical power consumption	2.5 W
Hysteresis	16 mA
Storage temperature	-40 °C ... 80 °C
Electrical connection 1, number of pins/wires	2
Current regulating range	0 mA ... 200 mA
Standard flow rate	46 l/min ... 56 l/min
Type code	VPWS
Actuation type	Electrical
Sealing principle	Soft
Mounting position	Any
Design	Directly controlled poppet valve
Reset method	Mechanical spring
Type of control	Direct
Flow direction	Non-reversible
Symbol	00995954
Valve function	2/2 proportional directional control valve, closed
Operating pressure	0 bar ... 3 bar
Nominal operating pressure	3 bar
Max. switching frequency	18 Hz
Corrosion resistance class (CRC)	1 - Low corrosion stress
Temperature of medium	5 °C ... 50 °C
Degree of protection	IP60
Ambient temperature	5 °C ... 50 °C
Product weight	23 g
Cable length	0.07 m ... 0.08 m

Feature	Value
Type of mounting	On sub-base Plug-in With accessories
Pneumatic connection 1	Cartridge 15 mm
Pneumatic connection 2	Cartridge 7.2 mm
Note on materials	Contains paint-wetting impairment substances RoHS-compliant
Seals material	FPM
Housing material	High-alloy steel