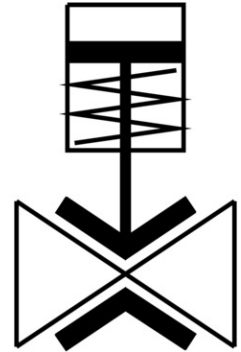


# Pinch valve VZQA-C-M22U-6-S5S5-V4V4S1-4

Part number: 2931682

FESTO



## Data sheet

Feature	Value
Type code	VZQA
Burst pressure	1.6 MPa
Differential pressure	36.25 psi
Burst pressure	232 psi
Differential pressure	0.25 MPa
Overload pressure	0.78 MPa
Overload pressure	113.1 psi
Operating pressure	0.1 MPa ... 0.65 MPa
Operating pressure	14.5 psi ... 94.25 psi
Medium pressure	0 MPa ... 0.4 MPa
Medium pressure	0 psi ... 58 psi
Design	Pinch valve, pneumatically operated
Actuation type	Pneumatic
Sealing principle	Soft
Mounting position	Any
Type of mounting	Line installation
Fitting connection	Clamp as per DIN 32676 series A
Nominal width DN	6
Valve function	2/2, open, monostable
Flow direction	Reversible
Medium pressure	0 bar ... 4 bar
Operating pressure	1 bar ... 6.5 bar
Nominal pressure of fitting PN	10
Differential pressure	2.5 bar
Burst pressure	16 bar
Overload pressure	7.8 bar
Reset method	Rebound resilience
Type of control	Externally controlled
Auxiliary pilot air port 12	M5
Pilot medium	Compressed air as per ISO 8573-1:2010 [7:4:4]

Feature	Value
Symbol	00995245
Medium	Compressed air as per ISO 8573-1:2010 [·:·:]
Max. viscosity	4000 mm <sup>2</sup> /s
Temperature of medium	-5 °C ... 150 °C
Ambient temperature	-5 °C ... 60 °C
Storage temperature	5 °C ... 30 °C
Flow rate Kv	0.7 m <sup>3</sup> /h
On switching time	125 ms
Switching time off	125 ms
Note on materials	Contains paint-wetting impairment substances RoHS-compliant
Housing material	High-alloy stainless steel
Material number of housing	1.4404
Housing cover material	High-alloy stainless steel
Seals material	FPM
Shut-off element material	VMQ (silicone)
Product weight	215 g
For use in the food industry	See declaration of conformity
Material of bowl	PA6