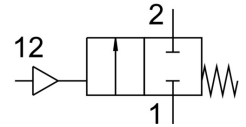


# Angle seat valve VZXF-L-M22C-M-A-G2-430-H3B1-50-4

FESTO

Part number: 1002510



## Data sheet

| Feature                                    | Value   |
|--|---|
| Type code                                  | VZXF  |
| Design                                     | Poppet valve with piston actuator                                 |
| Actuation type                             | Pneumatic   |
| Sealing principle                          | Soft  |
| Mounting position                          | Any   |
| Type of mounting                           | Line installation   |
| Cable connection                           | Threaded sleeve G2 as per DIN ISO 228                             |
| Nominal width                              | 43 mm   |
| Valve function                             | 2/2, closed, monostable   |
| Flow direction                             | Non-reversible  |
| Medium pressure                            | 0 bar ... 4 bar   |
| Nominal pressure of fitting PN             | 16  |
| Exhaust air function                       | Without flow control option                                       |
| Reset method                               | Mechanical spring   |
| Type of control                            | Externally controlled   |
| Pneumatic connection                       | Internal thread G1/8  |
| Operating pressure                         | 6 bar ... 10 bar  |
| Symbol                                     | 00991367  |
| Medium                                     | Vapor<br>Inert gas<br>Filtered compressed air, 200 µm filter mesh |
| Flow direction                             | Above valve seat, for gaseous media                               |
| Operating medium                           | Compressed air as per ISO 8573-1:2010 [7:4:4]                     |
| Max. viscosity                             | 600 mm <sup>2</sup> /s  |
| Temperature of medium                      | -10 °C ... 80 °C  |
| Ambient temperature                        | -10 °C ... 60 °C  |
| Flow rate Kv                               | 28 m <sup>3</sup> /h  |
| Note on materials                          | Contains paint-wetting impairment substances<br>RoHS-compliant    |
| Valve housing material                     | Red brass   |
| Material number, fitting housing           | CC499K  |
| Spindle seal material                      | NBR   |
| Seat seal material                         | PTFE  |
| Product weight                             | 2800 g  |
| CE marking (see declaration of conformity) | as per EU pressure equipment directive                            |
| Corrosion resistance class (CRC)           | 1 - Low corrosion stress  |

| Feature                | Value |
|------------------------|-------|
| Drive housing material | Brass |