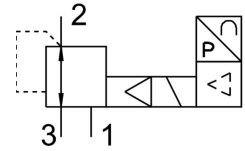


# Proportional pressure control valve VPPE-3-1/8-6-010

Part number: 539639

**FESTO**



## Data sheet

Feature	Value
KC characters	KC EMC
Nominal width pressurization	5 mm
Overall accuracy	2.25 %FS
Linearity	1 %FS
Reproducibility	0.5 %FS
Hysteresis	2.5 %FS
Inlet pressure 1 MPa	0.6 MPa ... 0.8 MPa
Operating pressure	0.8 MPa
Pressure regulation range MPa	0.015 MPa ... 0.6 MPa
Max. pressure hysteresis	0.015 MPa
Exhaust nominal width	2.5 mm
Type code	VPPE
Actuation type	Electrical
Sealing principle	Soft
Mounting position	Any Preferably vertical
Design	Pilot-controlled piston control valve
Short-circuit protection	For all electrical connections
Safety instructions	VPPE safety position: if the supply cable breaks, the outlet pressure is maintained in uncontrolled form.
Symbol	00995303
Reverse polarity protection	for all electrical connections
Valve function	3-way proportional pressure control valve closed
Operating pressure	≤8 bar
Pressure regulation range	0.15 bar ... 6 bar
Inlet pressure 1	7 bar ... 8 bar
Max. pressure hysteresis	0.15 bar
Standard nominal flow rate	850 l/min
Switching time off	1300 ms
On switching time	550 ms
DC operating voltage range	21.6 V ... 26.4 V
Max. current consumption	150 mA
Max. electrical power consumption	3.6 W
Residual ripple	10 %
Setpoint/actual values	Voltage type 0 - 10 V

Feature	Value
Operating medium	Compressed air as per ISO 8573-1:2010 [7:4:4] Inert gas
Information on operating and pilot media	Operation with oil lubrication not possible
CE marking (see declaration of conformity)	As per EU EMC directive
Corrosion resistance class (CRC)	2 - Moderate corrosion stress
Temperature of medium	10 °C ... 50 °C
Degree of protection	IP65
Ambient temperature	10 °C ... 50 °C
Certification	RCM compliance mark c UL us - Listed (OL)
Product weight	445 g
Temperature coefficient	0.04 %/K
Electrical connection	4-pin M12x1 Plug Round design
Type of mounting	With through-hole
Pneumatic connection 1	G1/8
Pneumatic connection 2	G1/8
Note on materials	RoHS-compliant
Housing material	Wrought aluminum alloy
Diaphragm material	NBR