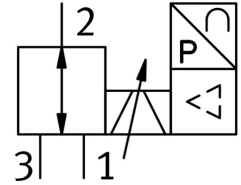


Proportional pressure control valve VPPI-5L-3-G18-0L10H-A4-S1D

Part number: 8104670

FESTO



Data sheet

Feature	Value
KC characters	KC EMC
Nominal width pressurization	5 mm
Electrical connection 1, function	Actual value output Setpoint input Power supply
Electrical connection 1, connection technology	M12x1 A-coded as per EN 61076-2-101
Seals material	HNBR PTFE
Setpoint input	4 - 20 mA
Flow direction	Non-reversible
Application note	The product is suitable for industrial purposes only. Radio interference suppression measures may be required in residential areas.
Display size	1.77"
Electrical connection for input 1, connection pattern	00994083
Display resolution	128x160 pixels
Electrical connection 1, connection type	Plug
Nominal altitude of use above sea level	< 3000 m NHN
Max. cable length	30 m
Dimensions W x L x H	42.2 mm x 95.3 mm x 94.3 mm
Climatic category	3K3 as per EN 60721
Max. load resistance of current output	500 Ohm
Precision analog output in ± %FS	1 %FS
Max. tightening torque of pneumatic fitting	8.5 Nm
Total leakage	5 l/h
Storage temperature	-20 °C ... 70 °C
Electrical connection 1, tightening torque	1.5 Nm
Electrical connection 1, number of pins/wires	5
Input resistance	0.3 kOhm
Overall accuracy	1.1 %FS
Linearity	0.9 %FS
Reproducibility	0.4 %FS
Hysteresis	0.4 %FS
Burst pressure	40 bar
Sound power level	62.5 dB(A)
Sound power level at a distance of 1 m	51.9 dB(A)
Inlet pressure 1 MPa	0 MPa ... 1.3 MPa

Feature	Value
Nominal current	0.15 A
Pressure regulation range MPa	0 MPa ... 1 MPa
Standard nominal flow rate 2-3	750 l/min
Exhaust nominal width	5 mm
Type code	VPPI
Actuation type	Electrical
Sealing principle	Soft
Mounting position	Any
Design	Poppet valve with return spring
Short-circuit protection	For all electrical connections
Safety instructions	Safety position VPPI, normally closed
Symbol	00997299
Reverse polarity protection	for all electrical connections
Reset method	Mechanical spring
Type of control	Direct
Valve function	3-way proportional pressure control valve
Display type	Color TFT
Operating pressure	10 bar ... 12 bar
Pressure regulation range	0 bar ... 10 bar
Inlet pressure 1	0 bar ... 13 bar
Standard nominal flow rate	1400 l/min
DC operating voltage range	20.4 V ... 27.6 V
Max. current consumption	525 mA
Max. electrical power consumption	14.5 W
Nominal operating voltage DC	24 V
Analog output signal range	4 - 20 mA
Operating medium	Compressed air as per ISO 8573-1:2010 [7:4:4] Inert gas
Information on operating and pilot media	Operation with oil lubrication not possible
CE marking (see declaration of conformity)	As per EU EMC directive As per EU RoHS directive
Vibration resistance	Transport application test with severity level 2 as per FN 942017-4 and EN 60068-2-6
Shock resistance	Shock test with severity level 2 as per FN 942017-5 and EN 60068-2-27
Corrosion resistance class (CRC)	2 - Moderate corrosion stress
Temperature of medium	0 °C ... 50 °C
Degree of protection	IP65
Ambient temperature	0 °C ... 50 °C
Certification	RCM compliance mark
Product weight	370 g
Temperature coefficient	0.02 %/K
Type of mounting	With through-hole for M4 screw With H-rail
Pneumatic connection 1	G1/8
Pneumatic connection 2	G1/8
Pneumatic connection 3	G1/8
Note on materials	RoHS-compliant
Housing material	PA-reinforced