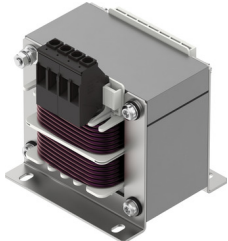


Filter flow control CAMF-C6-FD-C6-3A

Part number: 8088930

FESTO



Data sheet

Feature	Value
Electrical connection 1, connection type	Terminal strip
Electrical connection 2, connection type	Terminal strip
Electrical connection 1, connection technology	Screw terminal
Electrical connection 2, function	Power supply
Electrical connection 1, function	Power supply
Electrical connection 2, connection technology	Screw terminal
Electrical connection 1, occupied pins/wires	2
Electrical connection 1, number of pins/wires	2
Electrical connection 2, occupied pins/wires	2
Nominal operating voltage AC	400 V
Insulation voltage	2500 V
Nominal inductance tolerance	10 %
Electrical connection 2, number of pins/wires	2
Nominal inductance	5.7 mH
Mains frequency	50 Hz ... 60 Hz
Electrical connection 1, conductor cross section	4 mm ²
Electrical connection 2, conductor cross section	4 mm ²
Short-circuit protection	no
Current rating at 40°C	6 A
Operating voltage range AC	0 V ... 400 V
Certification	ENEC c UL - Recognized (OL)
CE marking (see declaration of conformity)	As per EU RoHS directive
Storage temperature	-10 °C ... 40 °C
Degree of protection	IP00
Ambient temperature	-10 °C ... 40 °C
Product weight	2000 g
Type of mounting	Mounting plate, screwed on
Note on materials	Contains paint-wetting impairment substances RoHS-compliant
Mounting position	Horizontal
Type code	CAMF