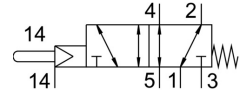
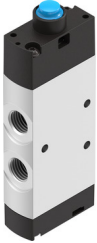


Stem actuated valve VMEF-SCZ-M52-M-G14

Part number: 8031327

FESTO



Data sheet

Feature	Value
Valve function	5/2, monostable
Lap	Overlap
Operating pressure	-0.095 MPa ... 1 MPa
Actuation type	Mechanical
Width	20 mm
Standard nominal flow rate	1200 l/min
Pneumatic working port	G1/4
Operating pressure	-0.95 bar ... 10 bar
Design	Piston gate valve
Reset method	Mechanical spring
Nominal width	7 mm
Type code	VMEF
Application note	Do not use as mechanical stop
Sealing principle	Soft
Mounting position	Any
Type of control	Pilot-controlled
Pilot air supply port	External
Flow direction	Reversible
Symbol	00992220
Pilot pressure	2.5 bar ... 10 bar
Max. switching frequency	3 Hz
Explosion prevention and protection	Zone 1 (ATEX) Zone 2 (ATEX) Zone 21 (ATEX) Zone 22 (ATEX)
Operating medium	Compressed air as per ISO 8573-1:2010 [7:-:-]
Information on operating and pilot media	Operation with oil lubrication possible (required for further use)
Corrosion resistance class (CRC)	2 - Moderate corrosion stress
Temperature of medium	-10 °C ... 60 °C
Ambient temperature	-10 °C ... 60 °C
Actuating force	14 N
Product weight	184 g
Type of mounting	With through-hole
Pilot air port 12/14	M5
Pneumatic connection 1	G1/4
Pneumatic connection 2	G1/4

Feature	Value
Pneumatic connection 3	G1/4
Pneumatic connection 4	G1/4
Pneumatic connection 5	G1/4
Note on materials	RoHS-compliant
Cover material	PA-reinforced
Seals material	NBR
Housing material	Wrought aluminum alloy, anodized