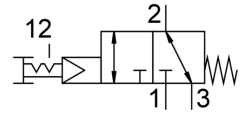


Pushbutton valve VHEF-PTC-B32-G14

Part number: 5299713

FESTO



Data sheet

Feature	Value
Valve function	3/2, bistable
Cover material	PA-reinforced
Lap	Zero overlap
Operating pressure	0.35 MPa ... 1 MPa
Actuation type	Manual
Width	20 mm
Standard nominal flow rate	870 l/min
Pneumatic working port	G1/4
Operating pressure	3.5 bar ... 10 bar
Design	Plate seat
Nominal width	6 mm
Type code	VHEF
Exhaust air function	With flow control option
Application note	Operate by hand only
Sealing principle	Soft
Mounting position	Any
Manual override	Detenting
Type of control	Pilot-controlled
Pilot air supply port	Internal
Flow direction	Reversible
Symbol	00995885
Pilot pressure	3.5 bar ... 10 bar
Max. switching frequency	0.5 Hz
Explosion prevention and protection	Zone 1 (ATEX) Zone 2 (ATEX) Zone 21 (ATEX) Zone 22 (ATEX)
Operating medium	Compressed air as per ISO 8573-1:2010 [7:-:-]
Information on operating and pilot media	Operation with oil lubrication possible (required for further use)
Corrosion resistance class (CRC)	1 - Low corrosion stress
Temperature of medium	-10 °C ... 60 °C
Ambient temperature	-10 °C ... 60 °C
Actuating force	20 N
Release force	25 N
Product weight	161 g

Feature	Value
Type of mounting	Optionally: Front panel mounting With through-hole
Pneumatic connection 1	G1/4
Pneumatic connection 2	G1/4
Pneumatic connection 3	G1/4
Note on materials	RoHS-compliant
Seals material	NBR
Housing material	Wrought aluminum alloy, anodized