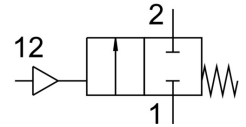


Angle seat valve VZXF-L-M22C-M-A-N34-180-M1-V4B2T-50-16

FESTO

Part number: 3539746



Data sheet

| Feature | Value |
|----------------------------------|---|
| Type code | VZXF |
| Design | Poppet valve with piston actuator |
| Actuation type | Pneumatic |
| Sealing principle | Soft |
| Mounting position | Any |
| Type of mounting | Line installation |
| Cable connection | Threaded sleeve NPT3/4 as per ANSI/ASME B 1.20.1 |
| Nominal width | 18 mm |
| Valve function | 2/2, closed, monostable |
| Flow direction | Non-reversible |
| Medium pressure | 0 bar ... 16 bar |
| Nominal pressure of fitting PN | 40 |
| Exhaust air function | Without flow control option |
| Reset method | Mechanical spring |
| Type of control | Externally controlled |
| Pneumatic connection | Internal thread G1/8 |
| Operating pressure | 6 bar ... 10 bar |
| Symbol | 00991367 |
| Medium | Vapor Inert gas Filtered compressed air, 200 µm filter mesh |
| Flow direction | Above valve seat, for gaseous media |
| Operating medium | Compressed air as per ISO 8573-1:2010 [7:4:4] |
| Max. viscosity | 600 mm ² /s |
| Temperature of medium | -40 °C ... 200 °C |
| Ambient temperature | -10 °C ... 60 °C |
| Flow rate Kv | 7.5 m ³ /h |
| Note on materials | Contains paint-wetting impairment substances RoHS-compliant |
| Valve housing material | Cast stainless steel |
| Material number, fitting housing | 1.4408 |
| Spindle seal material | PTFE |
| Seat seal material | PTFE |
| Product weight | 1400 g |
| Corrosion resistance class (CRC) | 2 - Moderate corrosion stress |
| Drive housing material | Brass, nickel-plated |