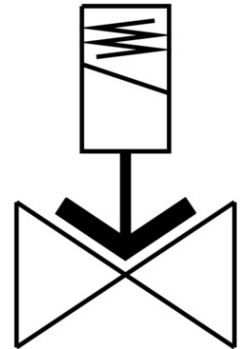


Air solenoid valve

VZWF-L-M22C-G114-400-V-1P4-10

Part number: 1492147

FESTO



Data sheet

| Feature | Value |
|----------------------------------|--|
| Type code | VZWF |
| Design | Diaphragm valve Force pilot operated |
| Actuation type | Electrical |
| Sealing principle | Soft |
| Mounting position | Magnet, upright |
| Type of mounting | Line installation |
| Fitting connection | G1 1/4 |
| Electrical connection | Form A Plug as per EN 175301-803 Rectangular design |
| Nominal width | 40 mm |
| Valve function | 2/2, closed, monostable |
| Manual override | None |
| Flow direction | Non-reversible |
| Medium | Compressed air as per ISO 8573-1:2010 [7:-:-] Inert gas Mineral oil Water Neutral liquids Other flow media on request |
| Nominal pressure of fitting PN | 40 |
| Differential pressure | 0 bar |
| Coil characteristics | 24 V DC: 30.0 W |
| Permissible voltage fluctuations | +/- 10 % |
| Symbol | 00992976 |
| Medium pressure | 0 bar ... 10 bar |
| Max. viscosity | 22 mm ² /s |
| Temperature of medium | -10 °C ... 80 °C |
| Ambient temperature | -10 °C ... 35 °C |
| Leak rate to EN 12266-1 | A |
| Flow rate Kv | 20 m ³ /h |

| Feature | Value |
|--|--|
| Standard nominal flow rate | 21370 l/min |
| On switching time | 620 ms |
| Switching time off | 1140 ms |
| Note on materials | Contains paint-wetting impairment substances RoHS-compliant |
| Housing material | Cast brass |
| Material number of housing | CW617N |
| Seals material | FPM |
| Material of screws | High-alloy stainless steel |
| Material number of screw | 1.4301 |
| Product weight | 4500 g |
| Degree of protection | IP65 |
| CE marking (see declaration of conformity) | as per EU pressure equipment directive |
| Corrosion resistance class (CRC) | 1 - Low corrosion stress |