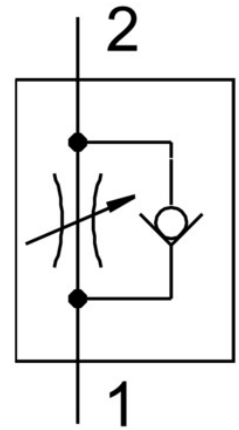


# One-way flow control valve GRLA-M5-QS-3-RS-D

Part number: 197576

FESTO



## Data sheet

| Feature                                                  | Value                                                              |
|----------------------------------------------------------|--------------------------------------------------------------------|
| Type code                                                | GRLA                                                               |
| Maritime classification                                  | See certificate                                                    |
| Valve function                                           | Exhaust air flow control non-return function                       |
| Pneumatic connection 1                                   | QS-3                                                               |
| Pneumatic connection 2                                   | M5                                                                 |
| Adjusting element                                        | Knurled screw                                                      |
| Type of mounting                                         | Screw-in                                                           |
| Standard nominal flow rate in flow control direction     | 100 l/min                                                          |
| Standard nominal flow rate in non-return direction       | 60 l/min ... 100 l/min                                             |
| Operating pressure                                       | 0.2 bar ... 10 bar                                                 |
| Ambient temperature                                      | -10 °C ... 60 °C                                                   |
| Mounting position                                        | Any                                                                |
| Symbol                                                   | 00991452                                                           |
| Operating pressure for entire temperature range          | 0.2 bar ... 10 bar                                                 |
| Standard flow rate in flow control direction 6 -> 0 bar  | 145 l/min                                                          |
| Standard flow rate in non-return direction at 6 -> 0 bar | 150 l/min ... 170 l/min                                            |
| Operating medium                                         | Compressed air as per ISO 8573-1:2010 [7:4:4]                      |
| Information on operating and pilot media                 | Operation with oil lubrication possible (required for further use) |
| Temperature of medium                                    | -10 °C ... 60 °C                                                   |
| Nominal tightening torque                                | 0.8 Nm                                                             |
| Product weight                                           | 14 g                                                               |
| Material of screwed trunnion                             | Brass                                                              |
| Note on materials                                        | RoHS-compliant                                                     |
| Seals material                                           | NBR                                                                |
| Releasing ring material                                  | POM                                                                |
| Material of adjusting screw                              | High-alloy stainless steel                                         |
| Swivel joint material                                    | Die-cast zinc<br>Chromated                                         |