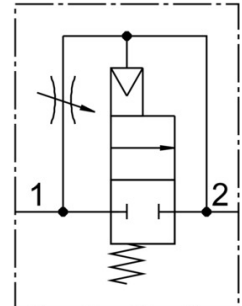


# Soft start valve MS4-DL-1/4-Z

Part number: 529532

FESTO



## Data sheet

Feature	Value
For use in the food industry	See supplementary material information
Type code	MS4-DL
Exhaust air function	With flow control option
Actuation type	Pneumatic
Mounting position	Any
Manual override	None
Design	Piston seat
Reset method	Mechanical spring
Type of control	Direct
Pilot air supply port	External
Flow direction	Non-reversible
Symbol	00991513
Valve function	2/2
Operating pressure	4 bar ... 14 bar
b-value	0.45
C value	9.6 l/sbar
Standard nominal flow rate	2000 l/min
Operating medium	Compressed air as per ISO 8573-1:2010 [7:4:4] Inert gas
Information on operating and pilot media	Operation with oil lubrication possible (required for further use)
Corrosion resistance class (CRC)	2 - Moderate corrosion stress
Temperature of medium	-10 °C ... 60 °C
Ambient temperature	-10 °C ... 60 °C
Product weight	213 g
Type of mounting	Optionally: Line installation With accessories
Pneumatic connection 1	G1/4
Pneumatic connection 2	G1/4
Note on materials	Free of copper and PTFE RoHS-compliant
Seals material	NBR
Housing material	Die-cast aluminum