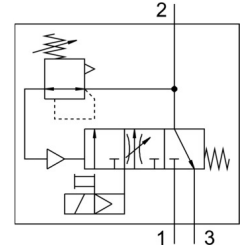


Soft start/quick exhaust valve MS9-SV-G-C-V24-S-VS

Part number: 570737

FESTO



Data sheet

Feature	Value
Series	MS
Size	9
Width dimension	90 mm
Type code	MS9-SV
Safety function	Exhausting
Performance Level (PL)	Exhaust/up to category 1, performance level c
Design	Piston gate valve
Actuation type	Electrical
Sealing principle	Soft
Exhaust air function	Without flow control option
Manual override	None
Reset method	Mechanical spring
Type of control	Pilot-controlled
Symbol	00995240
Valve function	3/2, closed, monostable Pressure build-up function
Operating pressure	3.5 bar ... 16 bar
Standard nominal flow rate	8300 l/min ... 16550 l/min
Standard flow rate exhaust 6→0 bar	19730 l/min ... 21720 l/min
Duty cycle	100%
Coil characteristics	24 V DC: 8.4 W
Permissible voltage fluctuations	+/- 10 %
Operating medium	Compressed air as per ISO 8573-1:2010 [7:4:4]
Information on operating and pilot media	Operation with oil lubrication possible (required for further use)
Corrosion resistance class (CRC)	2 - Moderate corrosion stress
Note on materials	RoHS-compliant
Noise level	93 dB(A)
Degree of protection	IP65
Temperature of medium	0 °C ... 60 °C
Ambient temperature	0 °C ... 60 °C
Storage temperature	0 °C ... 60 °C
Shock resistance	Shock test with severity level 1 as per FN 942017-5 and EN 60068-2-27
Vibration resistance	Transport application test with severity level 1 as per FN 942017-4 and EN 60068-2-6

Feature	Value
Type of mounting	Optionally: Line installation With accessories
Mounting position	Any
Product weight	3200 g
Pressure gauge connection	G1/4 G1/8
Pneumatic connection 3	G1 1 NPT
Electrical connection	Form A Plug as per EN 175301-803 Rectangular design
Housing material	Die-cast aluminum
Seals material	NBR
Piston slide material	Brass
Cover material	Wrought aluminum alloy
Lower cover material	PA