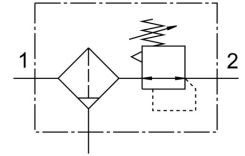


# Filter regulator LFRS-1/2-D-5M-O-MIDI

Part number: 194765

**FESTO**



## Data sheet

| Feature                                  | Value  |
|--|--|
| Size                                     | Midi   |
| Type code                                | LFRS   |
| Series                                   | D  |
| Actuator lock                            | Rotary knob with integrated lock                                   |
| Mounting position                        | Vertical +/- 5°  |
| Grade of filtration                      | 5 µm   |
| Condensate drain                         | Manually rotating  |
| Design                                   | Filter regulator without pressure gauge                            |
| Max. condensate volume                   | 43 ml  |
| Bowl guard                               | Metal bowl guard   |
| Symbol                                   | 00991586   |
| Pressure gauge                           | G1/4 prepared  |
| Operating pressure                       | 1 bar ... 16 bar   |
| Pressure regulation range                | 0.5 bar ... 12 bar   |
| Max. pressure hysteresis                 | 0.2 bar  |
| Standard nominal flow rate               | 2600 l/min   |
| Operating medium                         | Compressed air as per ISO 8573-1:2010 [-:9:-]<br>Inert gas         |
| Information on operating and pilot media | Operation with oil lubrication possible (required for further use) |
| Corrosion resistance class (CRC)         | 2 - Moderate corrosion stress                                      |
| Storage temperature                      | -10 °C ... 60 °C   |
| Air quality class at the output          | Compressed air as per ISO 8573-1:2010 [6:8:4]<br>Inert gas         |
| Temperature of medium                    | -10 °C ... 60 °C   |
| Ambient temperature                      | -10 °C ... 60 °C   |
| Product weight                           | 1140 g   |
| Type of mounting                         | Optionally:<br>Line installation<br>With accessories               |
| Pneumatic connection 1                   | G1/2   |
| Pneumatic connection 2                   | G1/2   |
| Note on materials                        | RoHS-compliant   |
| Housing material                         | Die-cast zinc  |
| Material of bowl                         | PC   |