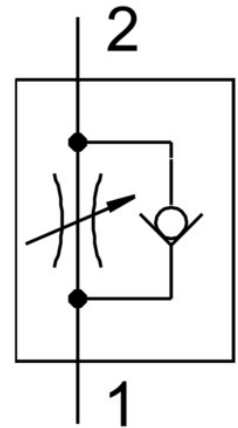


# One-way flow control valve GRLA-1/8-QS-3-RS-D

Part number: 197579

FESTO



## Data sheet

Feature	Value
Type code	GRLA
Maritime classification	See certificate
Valve function	Exhaust air flow control non-return function
Pneumatic connection 1	QS-3
Pneumatic connection 2	G1/8
Adjusting element	Knurled screw
Type of mounting	Screw-in
Standard nominal flow rate in flow control direction	130 l/min
Standard nominal flow rate in non-return direction	100 l/min ... 130 l/min
Operating pressure	0.2 bar ... 10 bar
Ambient temperature	-10 °C ... 60 °C
Mounting position	Any
Symbol	00991452
Operating pressure for entire temperature range	0.2 bar ... 10 bar
Standard flow rate in flow control direction 6 -> 0 bar	180 l/min
Standard flow rate in non-return direction at 6 -> 0 bar	200 l/min ... 220 l/min
Operating medium	Compressed air as per ISO 8573-1:2010 [7:4:4]
Information on operating and pilot media	Operation with oil lubrication possible (required for further use)
Temperature of medium	-10 °C ... 60 °C
Nominal tightening torque	3 Nm
Product weight	23 g
Material of screwed trunnion	Wrought aluminum alloy
Note on materials	RoHS-compliant
Seals material	NBR
Releasing ring material	POM
Material of adjusting screw	High-alloy stainless steel
Swivel joint material	Die-cast zinc Chromated