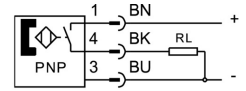
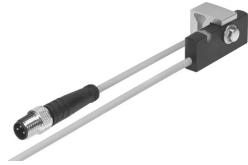


Proximity sensor SMT-C1-PS-24V-K-0,3-M8D

Part number: 571342

FESTO



Data sheet

Feature	Value
Type code	SMT
Design	Block design
Based on norm	EN 60947-5-2
Symbol	00991153
Certification	RCM compliance mark
CE marking (see declaration of conformity)	As per EU EMC directive
Note on materials	Free of copper and PTFE Halogen-free
Measured variable	Position
Measuring principle	Magneto-inductive
Ambient temperature	-20 °C ... 70 °C
Switching output	PNP
Switching element function	N/O contact
On time	≤0.5 ms
Switch-off time	≤0.5 ms
Max. output current	200 mA
Max. switching capacity DC	6 W
Voltage drop	<1.8 V
Short-circuit protection	Pulsed
Overload protection	Available
DC operating voltage range	10 V ... 30 V
Residual ripple	10 %
Reverse polarity protection	for all electrical connections
Electrical connection	3-pin Cable with plug M8x1 Rotatable thread
Connection outlet orientation	Longitudinal
Cable length	0.3 m
Material of cable sheath	TPE-O
Wire ends	Cable end sleeve
Type of mounting	Clamped
Tightening torque	1.2 Nm
Mounting position	Any
Product weight	24.4 g

Feature	Value
Housing material	Wrought aluminum alloy Brass, nickel-plated PP TPE-O TPE-U(PU) High-alloy stainless steel
Switching status indication	LED yellow
Ambient temperature with flexible cable installation	-20 °C ... 70 °C
Degree of protection	IP65 IP68 as per IEC 60529
For use in the food industry	See supplementary material information