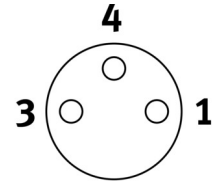
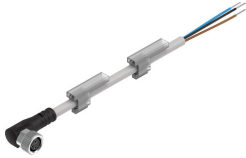


Connecting cable NEBU-M8W3P-K-5-LE3

Part number: 541340

FESTO



Data sheet

Feature	Value
Type code	NEBU
Conforms to standard	Wire colors and connection numbers as per EN 60947-5-2 EN 61076-2-104
Ready status indication	LED green
Switching status indication	LED yellow For PNP N/O contact
Cable designation	With 2x label holders
Product weight	123 g
Electrical connection 1, function	Field device end
Electrical connection 1, design	Round
Electrical connection 1, connection type	Socket
Electrical connection 1, cable outlet	Angled
Electrical connection 1, connection technology	M8x1 A-coded as per EN 61076-2-104
Electrical connection 1, number of pins/wires	3
Electrical connection 1, occupied pins/wires	3
Electrical connection 1, type of mounting	Screw-type lock
Electrical connection for input 1, connection pattern	00991871
Electrical connection 2, function	Control side
Electrical connection 2, connection type	Cable
Electrical connection 2, connection technology	Open end
Electrical connection 2, number of pins/wires	3
Electrical connection 2, occupied pins/wires	3
DC operating voltage range	10 V ... 30 V
Current rating at 40°C	3 A
Surge resistance	0.8 kV
Cable length	5 m
Cable characteristic	Standard
Connector cable test conditions	Flexural strength: as per Festo standard Test conditions on request Cable chain: 5 million cycles, bending radius 75 mm
Bending radius, fixed cable installation	12 mm
Bending radius, flexible cable installation	39 mm
Cable diameter	3.8 mm
Cable diameter tolerance	± 0.1 mm
Cable design	3 x 0.25 mm ²

Feature	Value
Nominal conductor cross section	0.25 mm ²
Degree of protection	IP65 IP68 IP69K
Note on degree of protection	In mounted state
Special features	Oil-resistant
Ambient temperature	-25 °C ... 70 °C
Ambient temperature with flexible cable installation	-5 °C ... 70 °C
CE marking (see declaration of conformity)	As per EU RoHS directive
Note on materials	Free of copper and PTFE RoHS-compliant Halogen-free Free of phosphoric acid ester
Contamination level	3
Corrosion resistance class (CRC)	2 - Moderate corrosion stress
Material of cable sheath	TPE-U(PUR)
Color cable sheath	Gray
Housing material	TPE-U(PUR)
Housing colour	Black
Material of screw-type lock	Brass, nickel-plated
Seals material	NBR
Material of pin contacts	Copper alloy, gold-plated
Insulating sheath material	PP