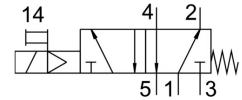
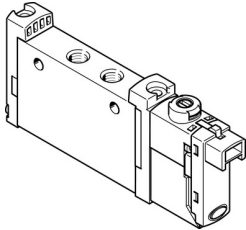


Air solenoid valve VUVG-L10-M52-MT-M5-1H2L-W1

Part number: 578162

FESTO



Data sheet

Feature	Value
Valve function	5/2, monostable
Lap	Overlap
Operating pressure	0.3 MPa ... 0.8 MPa
Pilot pressure MPa	0.3 MPa ... 0.8 MPa
Actuation type	Electrical
Valve size	10 mm
Standard nominal flow rate	190 l/min
Pneumatic working port	M5
Operating voltage	24V DC
Operating pressure	3 bar ... 8 bar
Design	Piston gate valve
Reset method	Mechanical spring
Degree of protection	IP40 With plug socket
Certification	RCM compliance mark c CSA us (OL) c UL us - Recognized (OL)
Nominal width	2.2 mm
Type code	VUVG
Exhaust air function	With flow control option
Sealing principle	Soft
Mounting position	Any
Manual override	Detenting Non-detenting Covered
Type of control	Pilot-controlled
Pilot air supply port	Internal
Symbol	00991003
Pilot pressure	3 bar ... 8 bar
Suitability for vacuum	no
Switching time off	24 ms
On switching time	8 ms
Duty cycle	100%
Max. positive test pulse with 0 signal	700 µs
Max. negative test pulse on 1 signal	900 µs
Coil characteristics	24 V DC: 1.0 W
Permissible voltage fluctuations	+/- 10 %

Feature	Value
Operating medium	Compressed air as per ISO 8573-1:2010 [7:4:4]
Information on operating and pilot media	Operation with oil lubrication possible (required for further use)
Vibration resistance	Transport application test with severity level 2 as per FN 942017-4 and EN 60068-2-6
Shock resistance	Shock test with severity level 2 as per FN 942017-5 and EN 60068-2-27
Restricted ambient and media temperature	-5 - 50 °C Without holding power reduction
Corrosion resistance class (CRC)	2 - Moderate corrosion stress
Temperature of medium	-5 °C ... 60 °C
Ambient temperature	-5 °C ... 60 °C
Product weight	44 g
Electrical connection	Via electrical sub-base
Type of mounting	Optionally: On terminal strip With through-hole
Pneumatic connection 1	M5
Pneumatic connection 2	M5
Pneumatic connection 4	M5
Pneumatic connection 5	M5
Note on materials	RoHS-compliant
Seals material	HNBR NBR
Housing material	Wrought aluminum alloy