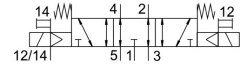


Air solenoid valve VSVA-B-P53E-ZD-D1-1R5L

Part number: 561377

FESTO



Data sheet

Feature	Value
Valve function	5/3, exhausted
Lap	Overlap
Operating pressure	-0.09 MPa ... 1.6 MPa
Pilot pressure MPa	0.3 MPa ... 1 MPa
Max. current consumption	72 mA
Actuation type	Electrical
Width	42 mm
Standard nominal flow rate	1300 l/min
Pneumatic working port	Sub-base, size 1 as per ISO 5599-1 G1/4
Operating voltage	24V DC
Operating pressure	-0.9 bar ... 16 bar
Design	Piston gate valve
Degree of protection	IP65 NEMA 4
Certification	c CSA us (OL) c UL us - Recognized (OL)
Nominal width	11 mm
Width dimension	43 mm
Type code	VSVA
Exhaust air function	With flow control option Via throttle plate Via individual sub-base
Sealing principle	Soft
Mounting position	Any
Conforms to standard	ISO 5599-1
Manual override	Detenting Non-detenting
Type of control	Pilot-controlled
Pilot air supply port	External
Flow direction	Any
Symbol	00991752
Signal status display	LED
Pilot pressure	3 bar ... 10 bar
Flow rate of pneumatic valve	1900 l/min
Flow rate of pneumatic valve on individual sub-base	1400 l/min
Optimized flow rate of pneumatic valve pneumatically concatenated flow	1300 l/min

Feature	Value
Switching time off	65 ms
On switching time	22 ms
Duty cycle	100%
Max. positive test pulse with 0 signal	1400 µs
Max. negative test pulse on 1 signal	900 µs
Coil characteristics	24 V DC: 1.6 W
Permissible voltage fluctuations	+/- 10 %
Operating medium	Compressed air as per ISO 8573-1:2010 [7:4:4]
Information on operating and pilot media	Operation with oil lubrication possible (required for further use)
Vibration resistance	Transport application test with severity level 2 as per FN 942017-4 and EN 60068-2-6
Shock resistance	Shock test with severity level 2 as per FN 942017-5 and EN 60068-2-27
Corrosion resistance class (CRC)	0 - No corrosion stress
Temperature of medium	-5 °C ... 50 °C
Relative air humidity	0 - 90 %
Pilot medium	Compressed air as per ISO 8573-1:2010 [7:4:4]
Ambient temperature	-5 °C ... 50 °C
Product weight	456 g
Electrical connection	3-pin M12x1 Central plug Round design
Type of mounting	On sub-base
Pilot air port 12/14	Sub-base, size 1 as per ISO 5599-1
Pilot exhaust air port 82/84	Optionally: Not ducted as per standard Ducted
Pneumatic connection 1	Sub-base, size 1 as per ISO 5599-1
Pneumatic connection 2	Sub-base, size 1 as per ISO 5599-1
Pneumatic connection 3	Sub-base, size 1 as per ISO 5599-1
Pneumatic connection 4	Sub-base, size 1 as per ISO 5599-1
Pneumatic connection 5	Sub-base, size 1 as per ISO 5599-1
Note on materials	RoHS-compliant
Seals material	FPM HNBR NBR
Housing material	Die-cast aluminum PA
Material of screws	Steel Galvanized