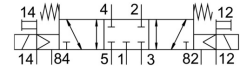
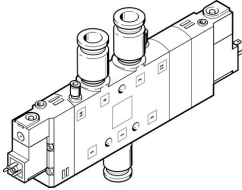


Air solenoid valve CPE24-M3H-5/3GS-QS-12

Part number: 170350

FESTO



Data sheet

Feature	Value
Valve function	5/3, closed
Maritime classification	See certificate
Lap	Overlap
Actuation type	Electrical
Width	24 mm
Standard nominal flow rate	1650 l/min
Pneumatic working port	QS-12
Operating voltage	230V AC
Operating pressure	-0.9 bar ... 10 bar
Design	Piston gate valve
Reset method	Mechanical spring
Degree of protection	IP65 With plug socket as per IEC 60529
Certification	c UL us - Recognized (OL)
Nominal width	11 mm
Type code	CPE24
Exhaust air function	With flow control option
Sealing principle	Soft
Mounting position	Any
Manual override	Detenting via accessory Non-detenting
Type of control	Pilot-controlled
Pilot air supply port	External
Flow direction	Reversible
Symbol	00991020
Valve position ID	Label holder
Pilot pressure	2.5 bar ... 10 bar
Switching time off	55 ms
On switching time	25 ms
Duty cycle	100%
Max. positive test pulse with 0 signal	3300 µs
Max. negative test pulse on 1 signal	3100 µs
Coil characteristics	230 V AC: 50/60 Hz, initial power 3.0 VA, holding power 2.4 VA
Permissible voltage fluctuations	-15 % / +10 %
Operating medium	Compressed air as per ISO 8573-1:2010 [7:4:4]

Feature	Value
Information on operating and pilot media	Operation with oil lubrication possible (required for further use)
Vibration resistance	Transport application test with severity level 2 as per FN 942017-4 and EN 60068-2-6
Shock resistance	Shock test with severity level 2 as per FN 942017-5 and EN 60068-2-27
Corrosion resistance class (CRC)	2 - Moderate corrosion stress
Temperature of medium	-5 °C ... 50 °C
Pilot medium	Compressed air as per ISO 8573-1:2010 [7:4:4]
Ambient temperature	-5 °C ... 50 °C
Electrical connection	Form C
Type of mounting	With through-hole
Pilot exhaust air port 82	M5
Pilot exhaust air port 84	M5
Pilot air port 12	M5
Pilot air port 14	M5
Pneumatic connection 1	QS-12
Pneumatic connection 2	QS-12
Pneumatic connection 3	G3/8
Pneumatic connection 4	QS-12
Pneumatic connection 5	G3/8
Note on materials	RoHS-compliant
Seals material	NBR
Housing material	Die-cast aluminum