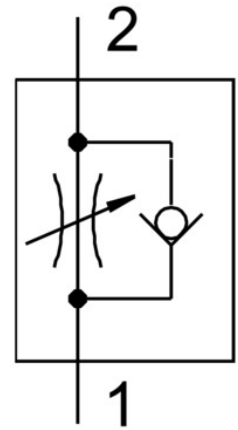


# One-way flow control valve GRLA-3/8-NPT-B

Part number: 151555

FESTO



## Data sheet

Feature	Value
Type code	GRLA
Valve function	Exhaust air flow control non-return function
Pneumatic connection 1	3/8 NPT
Pneumatic connection 2	3/8 NPT
Adjusting element	Slotted screw
Type of mounting	Screw-in
Ambient temperature	-10 °C ... 60 °C
Symbol	00991452
Operating pressure for entire temperature range	0.3 bar ... 10 bar
Operating medium	Compressed air as per ISO 8573-1:2010 [7:4:4]
Information on operating and pilot media	Operation with oil lubrication possible (required for further use)
Temperature of medium	-10 °C ... 60 °C
Note on materials	RoHS-compliant
Seals material	NBR
Hollow bolt material	Wrought aluminum alloy
Material of adjusting screw	Brass
Nut material	Wrought aluminum alloy
Swivel joint material	Die-cast zinc