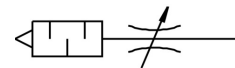


Exhaust air flow control valve GRE-3/8-NPT

Part number: 35311

FESTO



Data sheet

Feature	Value
Type code	GRE
Valve function	Sound pressure flow control function
Selection of additional function	With pneumatic muffler
Pneumatic connection 1	NPT3/8-18
Adjusting element	Slotted screw
Type of mounting	Screw-in
Standard flow rate 6->0 bar	3 l/min 2000 l/min
Operating pressure	0 bar ... 10 bar
Ambient temperature	-10 °C ... 70 °C
Symbol	00991451
Operating medium	Compressed air as per ISO 8573-1:2010 [7:4:4]
Information on operating and pilot media	Operation with oil lubrication possible (required for further use)
Temperature of medium	-10 °C ... 70 °C
Note on materials	RoHS-compliant