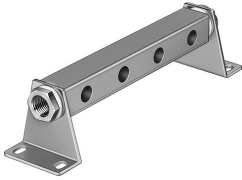


## Common supply manifold

### PAL-1/2-4

Part number: 9494

**FESTO**



## Data sheet

Feature	Value
Type code	PAL
Mounting position	Any
Max. no. of valve positions	4
Product weight	1060 g
Type of mounting	With mounting bracket
Pneumatic connection 1	G3/4
Note on materials	RoHS-compliant
Material of sub-base	Aluminum Anodized