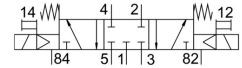
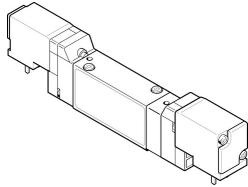


# Air solenoid valve MEH-5/3G-5,0-I-B

Part number: 173408

**FESTO**



## Data sheet

Feature	Value
Valve function	5/3, closed
Lap	Overlap
Actuation type	Electrical
Width	17.8 mm
Standard nominal flow rate	600 l/min
Pneumatic working port	Sub-base
Operating voltage	24V DC
Operating pressure	3 bar ... 8 bar
Design	Piston gate valve
Reset method	Mechanical spring
Degree of protection	IP65
Certification	c UL us - Recognized (OL)
Nominal width	5 mm
Width dimension	18 mm
Type code	MEH
Exhaust air function	With flow control option
Sealing principle	Soft
Mounting position	Any
Manual override	Detenting via accessory
Type of control	Pilot-controlled
Pilot air supply port	Internal
Flow direction	Non-reversible
Symbol	00991033
Pilot pressure	3 bar ... 8 bar
b-value	0.5
C value	2.55 l/sbar
Switching time off	25 ms
On switching time	20 ms
Duty cycle	100%
Coil characteristics	24 V DC: 0.95 W
Operating medium	Compressed air as per ISO 8573-1:2010 [7:4:4]
Information on operating and pilot media	Operation with oil lubrication possible (required for further use)
Vibration resistance	Transport application test with severity level 1 as per FN 942017-4 and EN 60068-2-6
Shock resistance	Shock test with severity level 2 as per FN 942017-5 and EN 60068-2-27
Corrosion resistance class (CRC)	2 - Moderate corrosion stress

Feature	Value
Storage temperature	-20 °C ... 40 °C
Temperature of medium	-5 °C ... 50 °C
Noise level	75 dB(A)
Pilot medium	Compressed air as per ISO 8573-1:2010 [7:4:4]
Ambient temperature	-5 °C ... 50 °C
Product weight	150 g
Electrical connection	Connection diagram form C as per industrial standard, 9.4 mm Plug Rectangular design
Type of mounting	On sub-base
Pilot exhaust air port 82/84	Sub-base
Pilot air port 12	Sub-base
Pilot air port 14	Sub-base
Pneumatic connection 1	Sub-base
Pneumatic connection 2	Sub-base
Pneumatic connection 3	Sub-base
Pneumatic connection 4	Sub-base
Pneumatic connection 5	Sub-base
Note on materials	RoHS-compliant
Seals material	HNBR NBR
Housing material	Die-cast aluminum