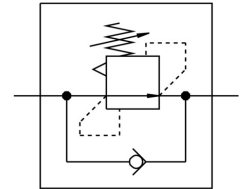


Differential pressure regulator LRLL-1/4-QS-10

Part number: 153506

FESTO



Data sheet

Feature	Value
Type code	LRLL
Controller function	Differential pressure constant With return flow function
Pneumatic connection 1	G1/4
Pneumatic connection 2	QS-10
Type of mounting	Screw-in
Nominal flow rate, open	269 l/min
Pressure regulation range	2 bar ... 6 bar
Inlet pressure 1	0 bar ... 9 bar
Ambient temperature	0 °C ... 60 °C
Housing material	PBT-reinforced
Operating medium	Compressed air as per ISO 8573-1:2010 [7:-:-]
Actuator lock	Counter-locking
Mounting position	Any
Design	Directly controlled piston regulator with continuous compressed air supply
Symbol	00991535
Nominal flow rate, closed	262 l/min
Information on operating and pilot media	Operation with oil lubrication possible (required for further use)
Product weight	42 g
Material of screwed trunnion	Brass Nickel-plated
Note on materials	RoHS-compliant
Material of threaded seal	PTFE