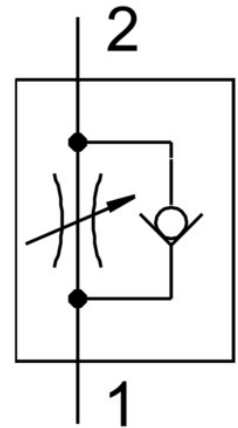


One-way flow control valve GRLA-1/8-PK-6-B

Part number: 151168

FESTO



Data sheet

Feature	Value
Type code	GRLA
Maritime classification	See certificate
Valve function	Exhaust air flow control non-return function
Pneumatic connection 1	PK-6 with union nut
Pneumatic connection 2	G1/8
Adjusting element	Slotted screw
Type of mounting	Screw-in
Standard nominal flow rate in flow control direction	300 l/min
Standard nominal flow rate in non-return direction	210 l/min ... 290 l/min
Ambient temperature	-10 °C ... 60 °C
Mounting position	Any
Symbol	00991452
Operating pressure for entire temperature range	0.3 bar ... 10 bar
Standard flow rate in flow control direction 6 -> 0 bar	455 l/min
Standard flow rate in non-return direction at 6 -> 0 bar	320 l/min ... 440 l/min
Explosion prevention and protection	Observe the information on the certificate Zone 1 (ATEX) Zone 2 (ATEX) Zone 21 (ATEX) Zone 22 (ATEX)
Operating medium	Compressed air as per ISO 8573-1:2010 [7:4:4]
Information on operating and pilot media	Operation with oil lubrication possible (required for further use)
Temperature of medium	-10 °C ... 60 °C
Max. tightening torque	6 Nm
Product weight	25 g
Material of screwed trunnion	Wrought aluminum alloy
Note on materials	RoHS-compliant
Seals material	NBR
Material of adjusting screw	Brass

Feature	Value
Swivel joint material	Die-cast zinc