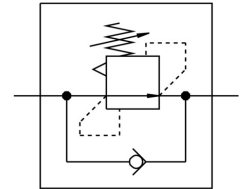


# Differential pressure regulator LRL-1/2-QS-12

Part number: 153521

**FESTO**



## Data sheet

Feature	Value
Type code	LRL
Controller function	Differential pressure constant With return flow function
Pneumatic connection 1	G1/2
Pneumatic connection 2	QS-12
Type of mounting	Screw-in
Nominal flow rate, open	760 l/min
Pressure regulation range	2 bar ... 6 bar
Inlet pressure 1	0 bar ... 9 bar
Ambient temperature	0 °C ... 60 °C
Housing material	PBT-reinforced
Operating medium	Compressed air as per ISO 8573-1:2010 [7:-:-]
Actuator lock	Counter-locking
Mounting position	Any
Design	Directly controlled piston regulator with continuous compressed air supply
Symbol	00991535
Nominal flow rate, closed	730 l/min
Information on operating and pilot media	Operation with oil lubrication possible (required for further use)
Product weight	110 g
Material of screwed trunnion	Brass Nickel-plated
Note on materials	RoHS-compliant
Material of threaded seal	PTFE