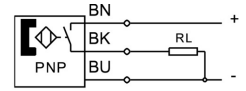
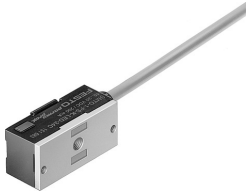


# Proximity sensor SMT0-1-PS-K-LED-24-C

Part number: 151683

FESTO



## Data sheet

Feature	Value
Type code	SMT0
Design	Block design
Symbol	00991152
Certification	RCM compliance mark
CE marking (see declaration of conformity)	As per EU EMC directive
Note on materials	Free of copper and PTFE
Measuring principle	Magneto-inductive
Ambient temperature	-25 °C ... 70 °C
Switching output	PNP
Switching element function	N/O contact
Reproducibility of switching value	+/- 0.1 mm
On time	≤1 ms
Switch-off time	≤1 ms
Max. output current	200 mA
Max. switching capacity DC	6 W
Voltage drop	≤3 V
Residual current	≤0.01 mA
Short-circuit protection	yes
Overload protection	Available
DC operating voltage range	10 V ... 30 V
Reverse polarity protection	for all electrical connections
Electrical connection	3-wire Cable
Connection outlet orientation	Longitudinal
Cable length	2.5 m
Cable characteristic	Standard
Material of cable sheath	PVC
Type of mounting	With accessories
Max. tightening torque	0.3 Nm
Product weight	85 g
Housing material	PET Die-cast zinc
Switching status indication	LED yellow
Ambient temperature with flexible cable installation	-5 °C ... 70 °C
Degree of protection	IP67