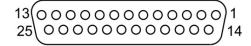
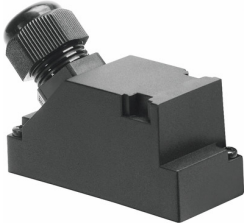


# Connecting cable KMP3-25P-16-10

Part number: 18625

FESTO



## Data sheet

Feature	Value
Type code	KMP3
Based on norm	DIN 41652
Cable designation	With accessories
Contact durability	50
Product weight	1303 g
Electrical connection 1, function	Field device end
Electrical connection 1, design	Rectangular
Electrical connection 1, connection type	Socket
Electrical connection 1, cable outlet	Angled
Electrical connection 1, connection technology	Sub-D
Electrical connection 1, number of pins/wires	25
Electrical connection 1, occupied pins/wires	18
Electrical connection 1, type of mounting	2x M3 screw
Electrical connection for input 1, connection pattern	00995642
Electrical connection 2, function	Control side
Electrical connection 2, connection type	Cable
Electrical connection 2, connection technology	Open end
Electrical connection 2, number of pins/wires	18
Electrical connection 2, occupied pins/wires	18
DC operating voltage range	0 V ... 30 V
Nominal operating voltage DC	24 V
Current rating at 40°C	3 A
Surge resistance	1 kV
Cable length	10 m
Cable characteristic	Standard
Connector cable test conditions	Test conditions on request
Bending radius, fixed cable installation	≥45 mm
Bending radius, flexible cable installation	≥90 mm
Cable diameter	8.5 mm
Cable diameter tolerance	± 0.5 mm
Cable design	18 x 0.34 mm <sup>2</sup>
Nominal conductor cross section	0.34 mm <sup>2</sup>
Wire ends	Cut off bluntly
Degree of protection	IP65
Note on degree of protection	In mounted state
Ambient temperature	-25 °C ... 70 °C

Feature	Value
Ambient temperature with flexible cable installation	-5 °C ... 70 °C
Storage temperature	-25 °C ... 75 °C
Note on materials	RoHS-compliant
Contamination level	3
Material of cable sheath	PVC
Color cable sheath	Gray
Housing material	PA
Seals material	NBR
Material of pin contacts	Copper alloy, gold-plated