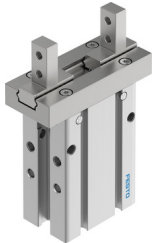


Parallel gripper DHPC-L-16-A-S

Part number: 8116803

FESTO



Data sheet

Feature	Value
Size	16
Operating pressure	14.5 psi ... 116 psi
Operating pressure	0.1 MPa ... 0.8 MPa
Stroke per gripper jaw	6 mm
Max. interchangeability	0.2 mm
Max. gripper jaw angular play ax, ay	0 deg
Max. gripper jaw backlash Sz	0 mm
Rotational symmetry	≤0.2 mm
Pneumatic gripper repetition accuracy	≤0.02 mm
Type code	DHPC
Number of gripper jaws	2
Mounting position	Any
Mode of operation	Double-acting
Gripper function	Parallel
Design	Connection direction at side Lever Standard mounting type for gripper fingers Positively driven motion sequence
Guide	Ball guide
Position sensing	For proximity sensor
Symbol	00991894
Total gripping force at 6 bar, opening	125.4 N
Total gripping force at 6 bar, closing	107.8 N
Operating pressure	1 bar ... 8 bar
Max. operating frequency of pneumatic gripper	3 Hz
Min. opening time at 6 bar	40 ms
Min. closing time at 6 bar	40 ms
Operating medium	Compressed air as per ISO 8573-1:2010 [7:4:4]
Information on operating and pilot media	Operation with oil lubrication possible (required for further use)
Corrosion resistance class (CRC)	0 - No corrosion stress
Ambient temperature	-10 °C ... 60 °C
Gripping force per gripper jaw at 6 bar, opening	62.7 N
Gripping force per gripper jaw at 6 bar, closing	53.9 N
Mass moment of inertia	0.214 kgcm ²
Maximum force on gripper jaw Fz, static	49 N
Maximum torque on gripper jaw, Mx static	0.34 Nm

Feature	Value
Maximum torque on gripper jaw, My static	0.68 Nm
Maximum torque on gripper jaw, Mz static	0.34 Nm
Max. mass per external gripper finger	360 g
Product weight	121 g
Type of mounting	Optionally: Direct mounting via through-hole Direct fastening via thread With through-hole and dowel pin With internal thread and dowel pin
Pneumatic connection	M3
Note on materials	Free of copper and PTFE RoHS-compliant
Housing material	Aluminum, anodized
Gripper jaw material	High-alloy stainless steel