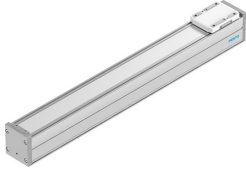


# Electric linear actuator ELFC-KF-80-600

Part number: 8062829

FESTO



## Data sheet

Feature	Value
Fy with theoretical service life of 100 km (from a guide perspective only)	3312 N
Mx with theoretical service life of 100 km (from a guide perspective only)	220 Nm
Mz with theoretical service life of 100 km (from a guide perspective only)	207 Nm
My with theoretical service life of 100 km (from a guide perspective only)	207 Nm
Fz with theoretical service life of 100 km (from a guide perspective only)	9936 N
Working stroke	600 mm
Size	80
Stroke reserve	0 mm
Type code	ELFC
Mounting position	Any
Guide	Recirculating ball bearing guide
Design	Guide
Symbol	00992984
Max. acceleration	500 m/s <sup>2</sup>
Max. speed	1.5 m/s
Duty cycle	100%
Corrosion resistance class (CRC)	0 - No corrosion stress
Degree of protection	IP40
Ambient temperature	0 °C ... 50 °C
2nd moment of area Iy	1370000 mm <sup>4</sup>
2nd moment of area Iz	1660000 mm <sup>4</sup>
Max. force Fy	900 N
Max. force Fz	2700 N
Max. torque Mx	59.8 Nm
Max. torque My	56.2 Nm
Max. torque Mz	56.2 Nm
Torsion moment of inertia It	90500 mm <sup>4</sup>
Displacement force	15 N
Moving mass	815 g
Additional weight per 10 mm stroke	73 g
Material of end caps	Die cast aluminum, painted
Profile material	Wrought aluminum alloy, anodized
Note on materials	Contains paint-wetting impairment substances RoHS-compliant

Feature	Value
Cover strip material	High-alloy stainless steel
Cover material	Die cast aluminum, painted
Slide carriage material	Steel
Guide rail material	Steel
Slide material	Die-cast aluminum