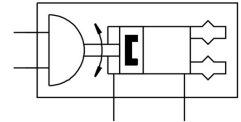
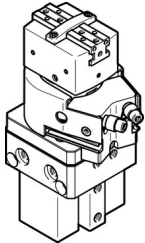


Swivel/gripper unit HGDS-PP-12-P-A-B

Part number: 1187955

FESTO



Data sheet

Feature	Value
Size	12
Adjustment range of swivel angle	0 deg ... 210 deg
Stroke per gripper jaw	2.5 mm
Max. gripper jaw angular play ax, ay	0.1 deg
Max. gripper jaw backlash Sz	0.02 mm
Swivel angle	210 deg
Type code	HGDS
Number of gripper jaws	2
Quarter turn actuator cushioning	Elastic cushioning rings/pads at both ends
Mounting position	Any
Quarter turn actuator fine tuning	-6 deg
Mode of operation	Double-acting
Gripper function	Parallel
Design	Quarter turn actuator with parallel gripper and gripper actuator
Position sensing, pneumatic gripper	With proximity sensor
Quarter turn actuator position sensing	With proximity sensor
Symbol	00991893
Operating pressure	3 bar ... 8 bar
Max. swivel frequency at 6 bar	2 Hz
Min. opening time at 6 bar	40 ms
Min. closing time at 6 bar	60 ms
Operating medium	Compressed air as per ISO 8573-1:2010 [7:4:4]
Information on operating and pilot media	Operation with oil lubrication possible (required for further use)
Corrosion resistance class (CRC)	2 - Moderate corrosion stress
Ambient temperature	5 °C ... 60 °C
Gripping force per gripper jaw at 6 bar, opening	42 N
Total gripping force at 6 bar, opening	84 N
Gripping force per gripper jaw at 6 bar, closing	37 N
Total gripping force at 6 bar, closing	74 N
Maximum force on gripper jaw Fz, static	90 N
Maximum torque on gripper jaw, Mx static	6 Nm
Maximum torque on gripper jaw, My static	6 Nm
Maximum torque on gripper jaw, Mz static	6 Nm
Theoretical torque at 6 bar	0.85 Nm
Max. mass per external gripper finger	30 g

Feature	Value
Product weight	505 g
Type of mounting	Optionally: With internal thread and centering sleeve Via through-hole and centering sleeve With dovetail slot
Pneumatic connection	M5
Note on materials	RoHS-compliant
Drive shaft material	Steel
Cover material	Aluminum POM
Seals material	NBR
Housing material	Wrought aluminum alloy
Gripper jaw material	High-alloy stainless steel