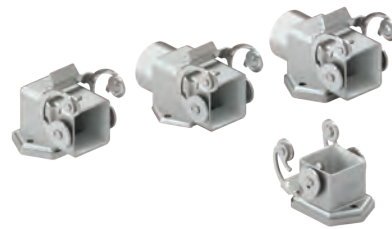


CKA -CKAX and MKA - MKAX EMC version for electromagnetic compatibility

inserts		page:
CK	3 poles + ⊕	58
CK	4 poles + ⊕	58
CKS	3 poles + ⊕	-
CKS	4 poles + ⊕	-
CKSH	3 poles + ⊕	63
CKSH	4 poles + ⊕	63
CD	8 poles	67
CQ4	2 poles + ⊕	182
CQ4 H	2 poles + ⊕	183
CQ4	3 poles + ⊕	184
CQ	5 poles + ⊕	186
CQ	7 poles + ⊕	187
CQ	12 poles + ⊕	189
CQ	21 poles + ⊕	190

bulkhead mounting housings straight and angled



hoods

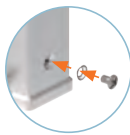


description	part No. (entry Pg 11)	part No. (entry M20)	part No. (entry Pg 11)	part No. (entry M20 / M25)
with stainless steel lever and gasket	CKAXS 03 I			
without cable entry, with stainless steel lever and gasket	CKAXS 03 IA			
with cable entry, with stainless steel lever and gasket	CKAXS 03 IAP	MKAXS IAP20		
with cable entry, with stainless steel lever and gasket	CKAXS 03 AP	MKAXS AP20		
with pegs, top entry			CKAS 03 V	MKAS V20
with pegs, top entry				MKAS V25
with pegs, side entry			CKAS 03 VA	MKAS VA20
with stainless steel lever, top entry			CKAXS 03 VG	MKAXS VG20
gasket and screw kit for IP66/IP67/IP69 1)	CKR 65		CKR 65	
for CK, CKSH, CQ4, CQ inserts				
gasket and screw kit for IP66/IP67/IP69 1)	CKR 65 D		CKR 65 D	
for CD 08 inserts				

1) To obtain the IP66/IP67/IP69 degree of protection, a kit with insert fixing screw and gasket can be purchased separately.
 Several inserts size "21.21" are already supplied with fixing screw and gasket, which ensures IP66/IP67/IP69 degree of protection. See list below, not including any special version:

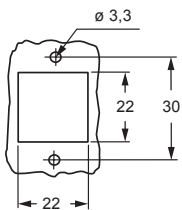
- CQF/M 07, CQF/M 12
- CJ KF/M
- CJK 8FT /8IFT /8MT /8IMT, CJK 8M
- CUK 2FT /3FT
- CX 1/2 BDF/M
- CLK 04 SCF /SCF-H /SCM
- CXL 2/4 PF /PM /PFH /PMH /SF /SM, CXL SF/M

NOTE: Housing type may vary upon specific part No.



versions with glued gasket (DESINA®) upon request

panel cut-out for bulkhead mounting housings

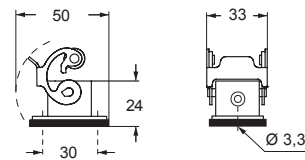


CAIUS®
 Type 12
 Type 4/4X only
 with CKR 65 (D)

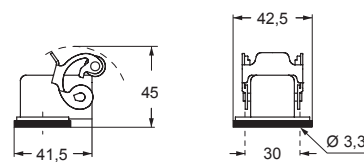


IP66/IP67/IP69 with CKR 65 (D) 1)

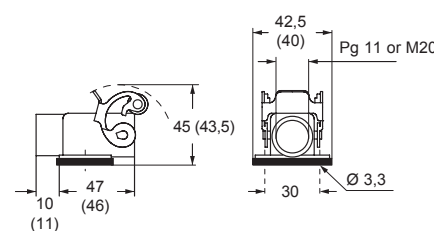
CKAXS I



CKAXS IA

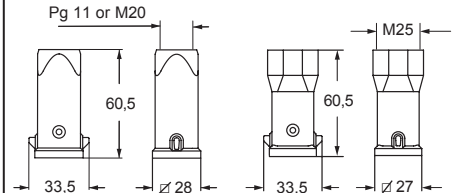


CKAXS IAP (CKAXS AP) and MKAXS IAP (MKAXS AP)

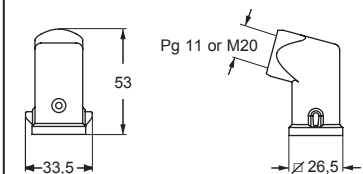


CKAS V and MKAS V

MKAS V25



CKAS VA and MKAS VA



CKAXS VG and MKAXS VG

