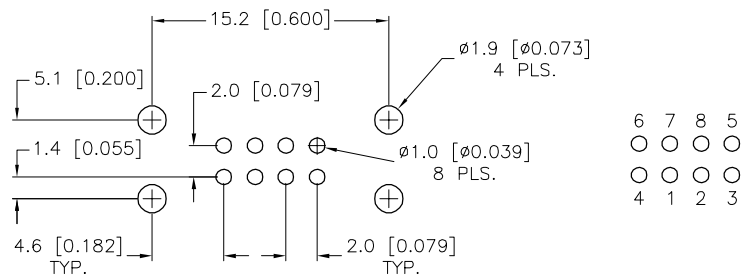
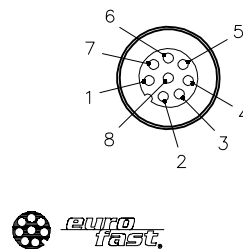


BOARD LAYOUT – TOP VIEW



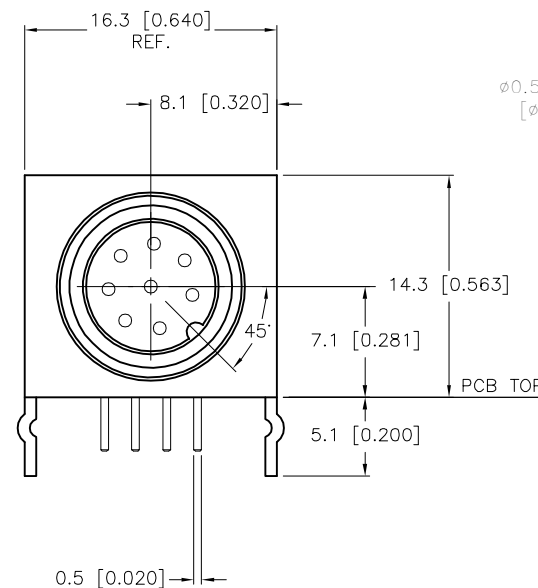
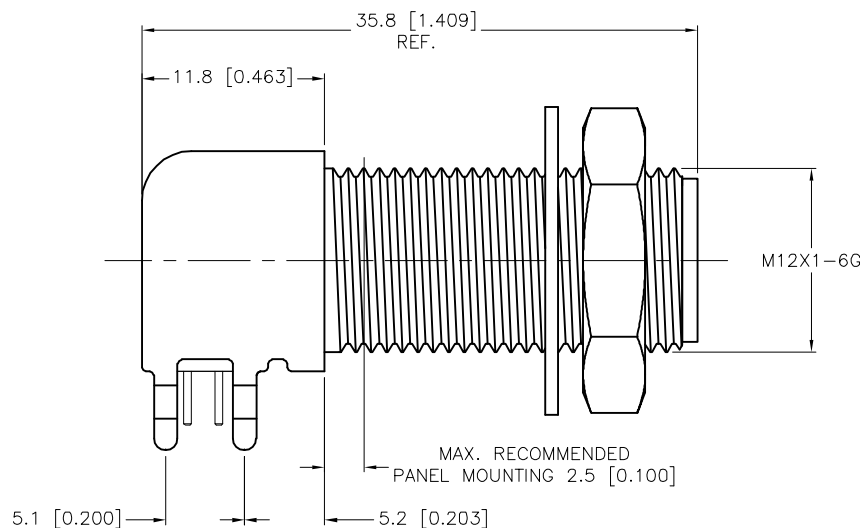
CONNECTOR SIDE

MALE END VIEW

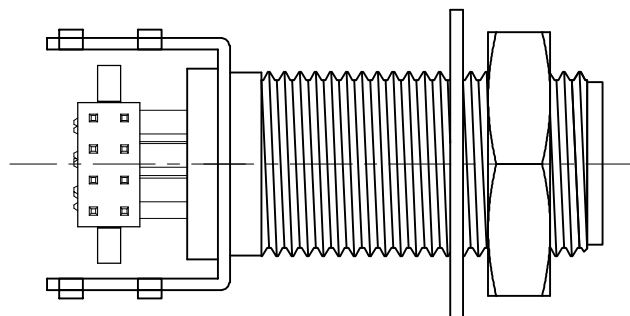


SPECIFICATIONS

CONTACT CARRIER MATERIAL/COLOR	NYLON/BLACK
CONTACT MATERIAL/PLATING	BRASS/GOLD
HOUSING, LOCKNUT MATERIAL/PLATING	BRASS/NICKEL
RATED CURRENT [A]	1.5 A
RATED VOLTAGE [V]	30 VAC/36 VDC
NUMBER OF CONDUCTORS [AWG]	PRINTED CIRCUIT PINS
TEMPERATURE RATING	-40°C to +80°C (-40°F to +176°F)
PROTECTION CLASS	MEETS NEMA 1,3,4,6P AND IEC IP68

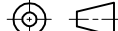

 $\varnothing 0.500 \pm 0.010$
 $[\varnothing 12.7 \pm 0.2]$

MOUNTING HOLE



UNIT SNAP-FITS INTO 0.062 TO 0.125 THICK PC BOARDS.

SOURCE DRAWING - FOR REFERENCE ONLY

RELATED DOCUMENTS 1. 2. 3. 4.	3RD ANGLE PROJECTION	<div>THIS DRAWING IS CONFIDENTIAL AND THE PROPERTY OF TURCK INC. USE OF THIS DOCUMENT WITHOUT WRITTEN PERMISSION IS PROHIBITED.</div>		<div>TURCK</div> <div>3000 CAMPUS DRIVE MINNEAPOLIS, MN 55441 1-800-544-7769 (763) 553-7300 (763) 553-0708 fax www.turck.us</div>		
						
	MATERIAL	ALL DIMENSIONS DISPLAYED ON THIS DRAWING ARE FOR REFERENCE ONLY CONTACT TURCK FOR MORE INFORMATION	DRFT DF	DATE 02/03/00	DESCRIPTION WFS 8-PCB	
	APVD DF		SCALE 2=1.0			
FINISH	UNIT OF MEASUREMENT MILLIMETER [INCH] DO NOT SCALE THIS DRAWING		IDENTIFICATION NO. U2369-60		REV C	
			FILE: U2369-60	SHEET 1 OF 1		

C	UPDATE BOARD LAYOUT	NF	08/13/20	76094
REV	DESCRIPTION	BY	DATE	ECO. NO.