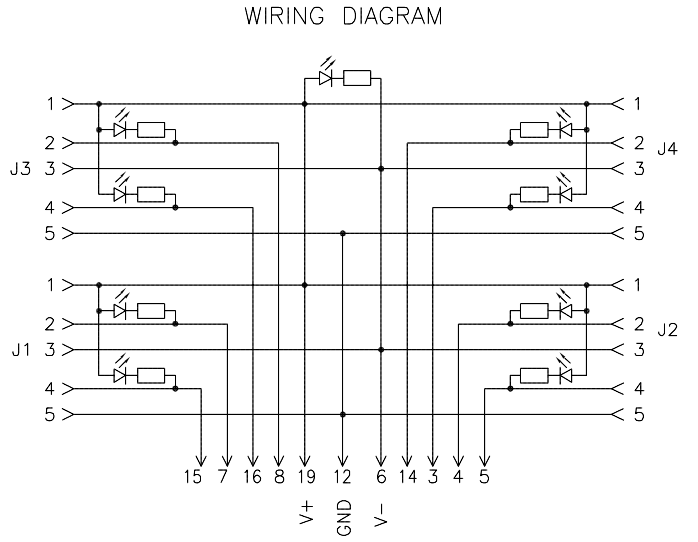
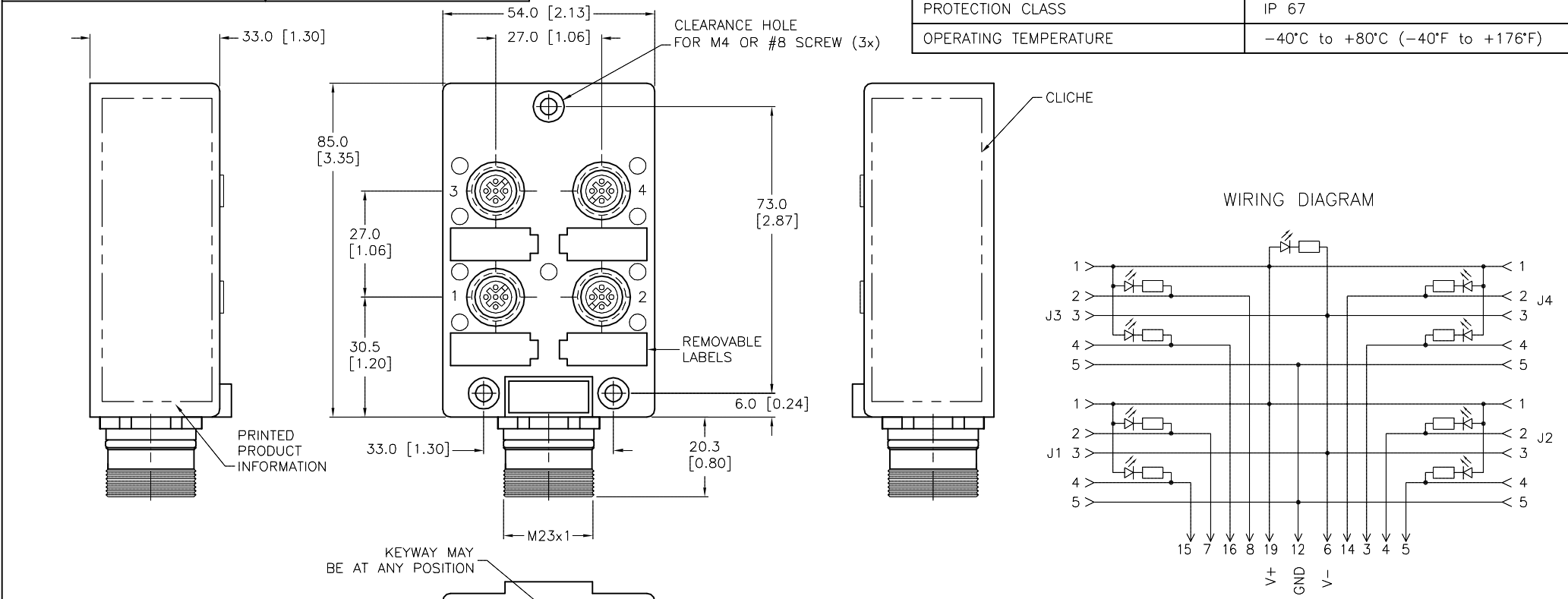

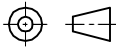


SPECIFICATIONS	
HOUSING/COLOR	NYLON/YELLOW
CONTACT CARRIER MATERIAL/COLOR (J1-J4)	TPU/BLACK
RECEPTACLE HOUSING MAT'L/PLATING (J1-J4)	BRASS/NICKEL
CONTACT MATERIAL/PLATING	BRASS/GOLD
SEALING RING	VITON O-RING
CONNECTOR HOUSING MAT'L/PLATING	BRASS/NICKEL
OPERATING VOLTAGE	10-48 VDC
MAXIMUM CURRENT	3 AMPS PER PORT, 9 AMPS TOTAL
PROTECTION CLASS	IP 67
OPERATING TEMPERATURE	-40°C to +80°C (-40°F to +176°F)



SOURCE DRAWING - FOR REFERENCE ONLY

 CLOSURE CAPS 2 (INCLUDED)			
C	UPDATED CLOSURE CAPS	TV	09/15/15 48811
REV	DESCRIPTION	BY	DATE ECO NO.

RELATED DOCUMENTS		3RD ANGLE PROJECTION		<div>THIS DRAWING IS CONFIDENTIAL AND THE PROPERTY OF TURCK INC. USE OF THIS DOCUMENT WITHOUT WRITTEN PERMISSION IS PROHIBITED.</div> <div><b>TURCK INC</b> <i>High Technology Sensors and Automation Controls</i></div>		<div>3000 CAMPUS DRIVE MINNEAPOLIS, MN 55441 1-800-544-7769 (763) 553-7300 (763) 553-0708 fax turck.com</div>	
1. 2. 3. 4.							
MATERIAL		DRFT CBM		DATE 10/29/97		DESCRIPTION  VB 40.5-N7X9-CS19	
SEE SPECIFICATIONS		APVD		SCALE 1=1.5			
FINISH		UNIT OF MEASUREMENT  <b>MILLIMETER [ INCH ]</b>		IDENTIFICATION NO.  U7016-11		REV  C	
SEE SPECIFICATIONS							
		CONTACT TURCK FOR MORE INFORMATION		DO NOT SCALE THIS DRAWING		FILE: U7016-11	
						SHEET 1 OF 1	