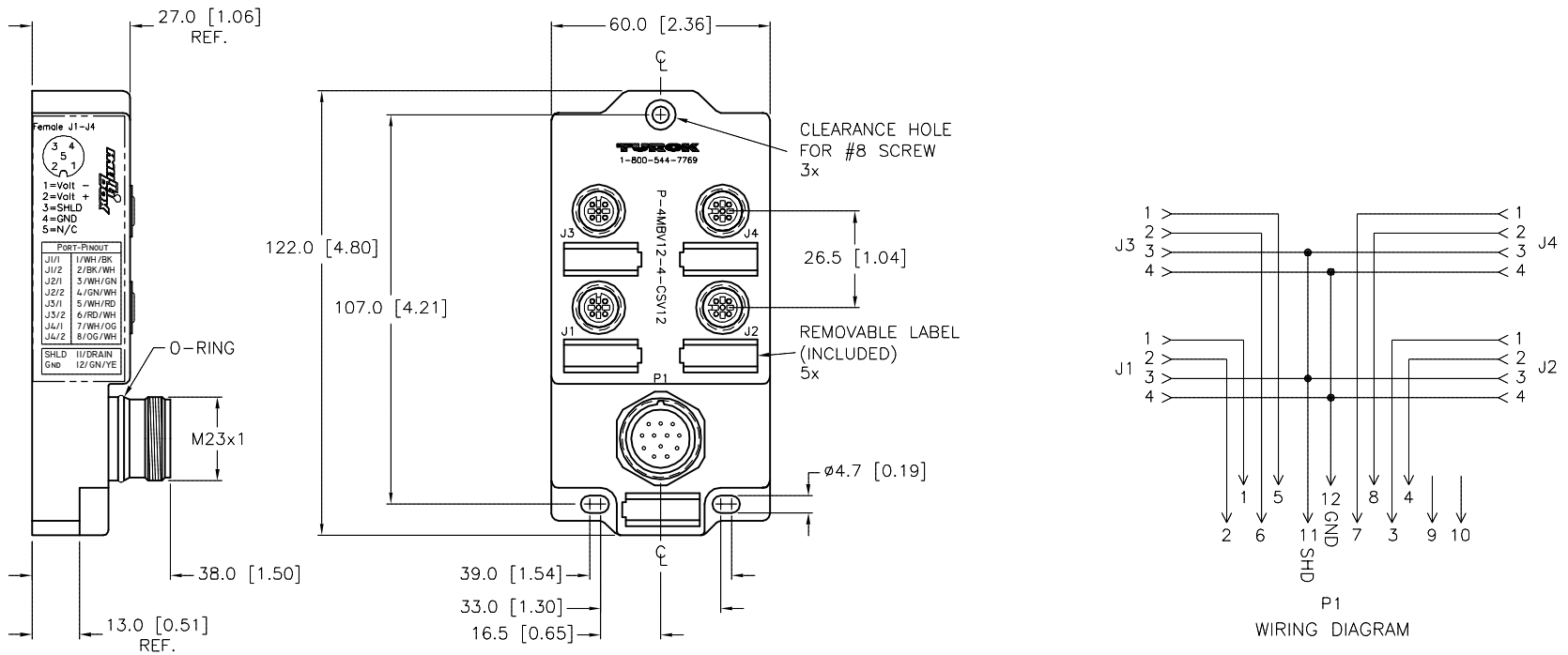


MALE END VIEW (P1)

FEMALE END VIEW (J1-J4)

SPECIFICATIONS

MATERIAL	
HOUSING/COLOR	NYLON/BLACK
RECEPTACLES	STAINLESS STEEL/PASSIVATED
CONTACT CARRIERS/COLOR	NYLON/BLACK (J1-J4), PBT/WHITE (P1)
CONTACTS	GOLD-PLATED BRASS
SEALING RING	VITON O-RINGS
ELECTRICAL DATA	
OPERATING VOLTAGE	150 V
OPERATING CURRENT	4.0 AMPS PER PORT, 8.0 AMPS TOTAL
SPACINGS	to VDE 0110 GROUP C
MECHANICAL DATA	
PROTECTION CLASS to DIN 40050	IP 67 - ONLY WHEN ALL RECEPTACLES ARE COVERED WITH PLUGS OR CONNECTED
OPERATING TEMPERATURE	-30°C to +80°C (-25°F to +176°F)



SOURCE DRAWING - FOR REFERENCE ONLY

CLOSURE CAPS
(2 INCLUDED)

RELATED DOCUMENTS		3RD ANGLE PROJECTION		THIS DRAWING IS CONFIDENTIAL AND THE PROPERTY OF TURCK INC. USE OF THIS DOCUMENT WITHOUT WRITTEN PERMISSION IS PROHIBITED.		TURCK INC High Technology Sensors and Automation Controls		3000 CAMPUS DRIVE MINNEAPOLIS, MN 55441 1-800-544-7769 (763) 553-7300 (763) 553-0708 fax turck.com	
1.				DRFT	DD	DATE	11/14/03	DESCRIPTION P-4MBV12-4-CSV12	
2.				APVD		SCALE	1=2		
3.				UNIT OF MEASUREMENT MILLIMETER [INCH]				IDENTIFICATION NO. U0918-71	
4.				DO NOT SCALE THIS DRAWING					
MATERIAL SEE SPECIFICATIONS		ALL DIMENSIONS DISPLAYED ON THIS DRAWING ARE FOR REFERENCE ONLY		CONTACT TURCK FOR MORE INFORMATION		REV C		FILE: EURO-B\U0918-71	
FINISH SEE SPECIFICATIONS									
C	UPDATED CLOSURE CAPS	TV	09/17/15	48811					
REV	DESCRIPTION	BY	DATE	ECO NO.					