

This **busstop**® station has four input connectors. Each connector provides one input. The LED at each input point turns green when the input is on. Inputs are protected against short-circuit as a group. If any input is shorted, the entire group of inputs are disconnected from bus power.

The PLC is informed of short conditions via the input data map. The IGS bit indicates that all of the inputs are no longer powered.

The node address can be set using the rotary switches located under the device cover or through software node commissioning. The unit can automatically detect the network communication rate.

The FDNQ-S0400-C supports explicit messaging, poll, change of state, and cyclic I/O messages. These connections are established through UCMM or predefined master/slave connection set.

FDNQ-S0400-C

- Advanced DeviceNet™ station
- Four input connectors

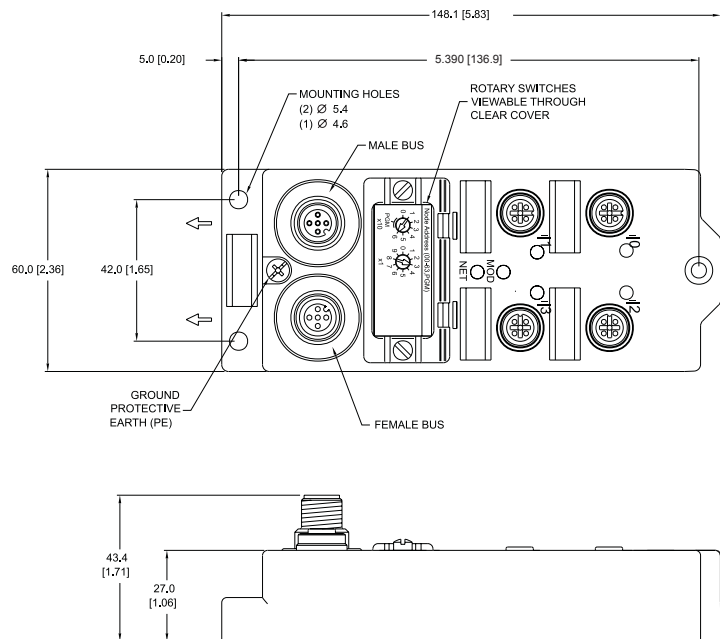
Applications

- For wet or dry environments
- For use with four three-wire discrete sensors

Features

- PNP short-circuit protected inputs
- Glass filled nylon with nickel plated brass connectors
- Rotary Address Switches

Dimensions



Connectors

DeviceNet Style: 5-Pin eurofast® Cordset: Busline use RSC RKC 579- *M Tee : Bus Line use RSC 2RKC 57	<div data-bbox="997 1591 1101 1696"> 1 = Shield 2 = V + 3 = V - 4 = CAN_H 5 = CAN_L </div> <div data-bbox="1143 1591 1430 1703"> </div> <p>Through Bus</p>
Type "S" Style: 5-Pin eurofast® Cordset: Single Sensor use RK 4.4T*-RS 4.4T Field Wireable: Single Sensor use BS 8141-0	<div data-bbox="1029 1789 1105 1885"> 1 = V+ 2 = N/C 3 = V- 4 = Input 5 = PE </div> <div data-bbox="1182 1789 1414 1892"> </div> <p>Single Sensor</p>

Module Specifications

FDNQ-S0400-C Four PNP Input, Group Diagnostic



Supply Voltage

Bus power	11-26 VDC
Internal current consumption	≤75mA plus sum of sensor and output currents (from bus power)

Input Circuits

Input voltage (V+)	13-26 VDC (from bus power)
Input short circuit (V+)	<700mA (total, short-circuit protected)
Input signal current (Input)	OFF <2mA ON 3.0-3.4 mA at 24VDC
Input delay	2.5 ms

I/O LED Indications

Off=Off
Green=On

Module Status LED

Green: working properly
Flashing green: detecting autobaud rate
Flashing red: I/O short-circuit

Network Status LED

Green: established connection
Flashing Green: ready for connection
Flashing red: connection time-out
Red: connection not possible

Adjustments

via Rotary Switch

Address 0-63

Housing

Material	glass filled nylon with nickel plated brass connectors
Enclosure	NEMA 1,3,4,12,13 and IEC IP 67
Operating temperature	-40° to 70°C (-40° to 158°F)

I/O Data Mapping

Item Number/EDS File: F0192/I0192_xx.eds

Product Code: 7/3073 (C01 hex)

Input	Byte	Bit 7	Bit 6	Bit 5	Bit 4	Bit 3	Bit 2	Bit 1	Bit 0
Data	0	IGS	-	-	-	I-3	I-2	I-1	I-0

Abbreviations

I = Input Data (0=OFF, 1=ON) O = Output Data (0=OFF, 1=ON)
ISS = Input Short Status (0=Working, 1=Fault) OS = Output Status (0=Working, 1=Fault)
IOS = Input Open Status (0=Working, 1=Fault) OGS = Output Group Status (0=Working, 1=Fault)
IGS = Input Group Status (0=Working, 1=Fault) APS = Aux Power Status (0=OFF, 1=ON)