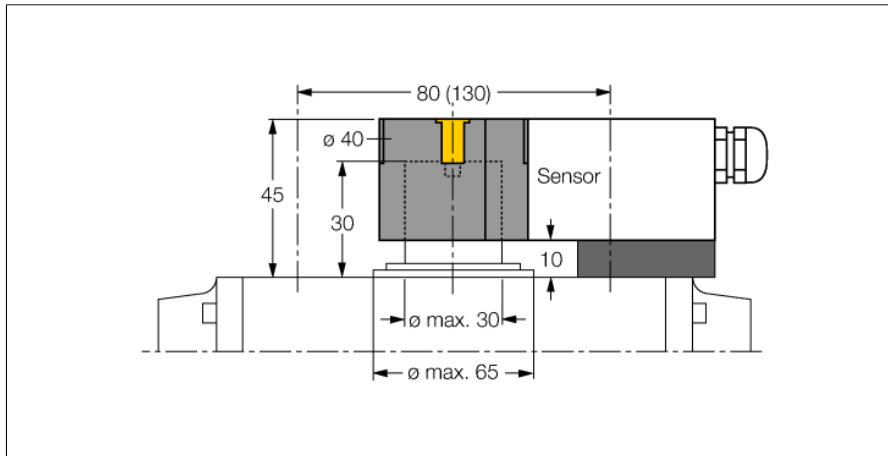


Accessories

Mounting Kit

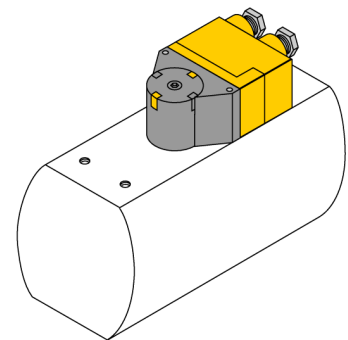
BTS-DSU35-Z04



Mounting kit for larger rotary actuators:
Ø spacer plate and snap ring: max. 65 mm
Hole pattern on flange surface: 30 x 80 (30 x 130 mm)
Connection shaft (shaft extension) height: 30 mm/Ø: max. 30 mm
Included in delivery:
1 spacer plate 10 mm
Mounting the spacer plate:
2 cylinder screws M5 x 22 [DIN 912-A2]
2 lock washers A5 [DIN 137-A2]

General description

Dual sensors are especially designed for position detection in rotary actuators. They combine the reliability of non-contact inductive sensors with the flexibility of a modular housing system. A broad range of practice-oriented accessories ensure optimal adaption to your system.



Type designation

Ident-No.

BTS-DSU35-Z04
6900286

Design

Housing material

Accessories for dual sensors, Ni4-DSU35...
Plastic, POM