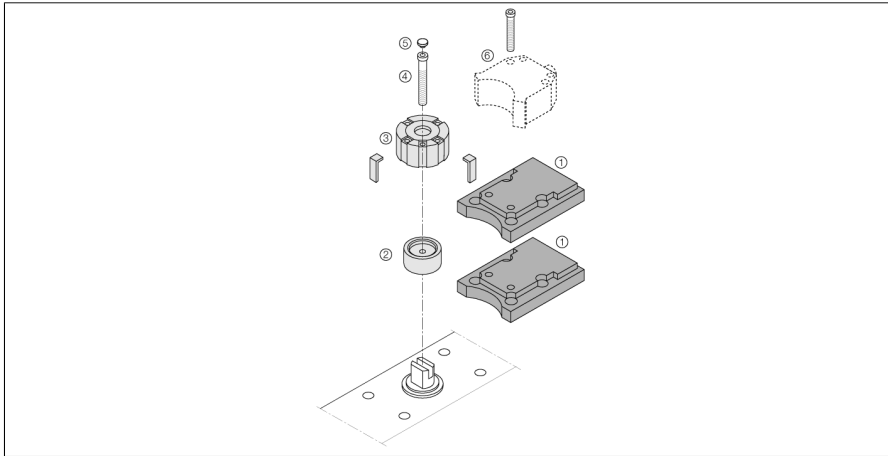


## Accessories

### Actuation kit (puck)

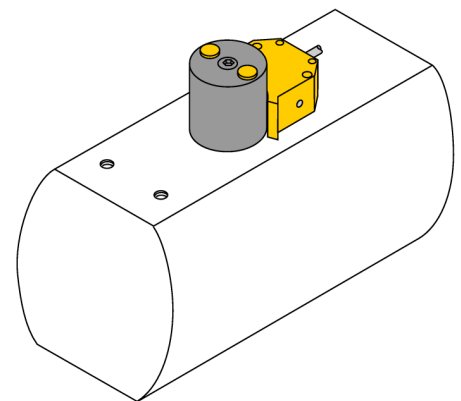
### BTS-DS20-RO1



- End position damped
- damping and position display via puck insertion parts
- Hole pattern on flange surface: 80 x 30 mm and 130 x 30 mm
- Connection shaft (shaft extension) height: 10 mm/Ø: max. 30 mm
- With two universal intermediate plates (each 10 mm high) for use with shaft extension heights of 20 or 30 mm.

#### General description

Dual sensors are especially designed for position detection in rotary actuators. They combine the reliability of non-contact inductive sensors with the flexibility of a modular housing system. A broad range of practice-oriented accessories ensure optimal adaption to your system.



#### Type designation

Ident-No.

BTS-DS20-RO1  
6900174

#### Design

Housing material

Accessories for dual sensors, Ni4-DS20-...  
Plastic, POM