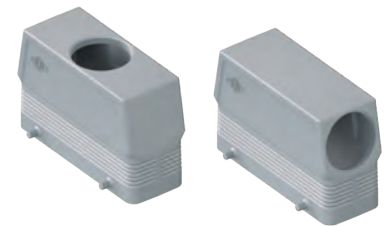


CH - CA - CF and MH - MA - MF C-TYPE standard version

inserts		page:
CD	64 poles + ⊕	72
CDD	108 poles + ⊕	81
CDS	42 poles + ⊕	-
CDSH	42 poles + ⊕	89
CNE	24 poles + ⊕	113
CSE	24 poles + ⊕	-
CSH	24 poles + ⊕	113
CSH S	24 poles + ⊕	125
CCE	24 poles + ⊕	133
CMSH	10+2 (aux) poles + ⊕	140
CMCE	10+2 (aux) poles + ⊕	141
CSS	24 poles + ⊕	151
CQE	46 poles + ⊕	171
CQEE	64 poles + ⊕	177
CX	4/8 and 6/6 poles + ⊕	204 and 206
MIXO	6 modules	262 - 317

hoods with 4 pegs**hoods with 4 pegs****M40 cable entry with 20 mm thread length**

description	part No.	entry Pg	part No	entry M	part No.	entry Pg	part No.	entry M
with pegs, side entry	CHO 24	21	MHO 24.25	25				
with pegs, side entry			MHO 24.32	32				
with pegs, side entry, high construction	CAO 24.21	21	MAO 24.32	32				
with pegs, side entry, high construction	CAO 24.29	29	MAO 24.40	40				
with pegs, side entry, high construction, without adapter ¹⁾					CFO 24.21	21	MFO 24.32	32
with pegs, side entry, high construction, without adapter ¹⁾					CFO 24.29	29	MFO 24.40	40
with pegs, top entry	CHV 24	21						
with pegs, top entry ²⁾			MHV 24.25	25				
with pegs, top entry			MHV 24.32	32				
with pegs, top entry	CHV 24.29	29	MHV 24.40	40				
with pegs, top entry, high construction	CAV 24.21	21	MAV 24.32	32				
with pegs, top entry, high construction	CAV 24.29	29	MAV 24.40	40				
with pegs, top entry, high construction, without adapter ¹⁾					CFV 24.21	21	MFV 24.32	32
with pegs, top entry, high construction, without adapter ¹⁾					CFV 24.29	29	MFV 24.40	40
with pegs, frontal entry, high construction	CAF 24.21	21	MAF 24.25	25				
with pegs, frontal entry, high construction	CAF 24.29	29	MAF 24.32	32				
with pegs, frontal entry, high construction, without adapter ¹⁾	CFF 24.21	21	MFF 24.25	25				
with pegs, frontal entry, high construction, without adapter ¹⁾	CFF 24.29	29	MFF 24.32	32				

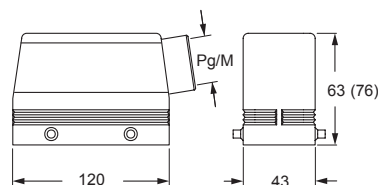
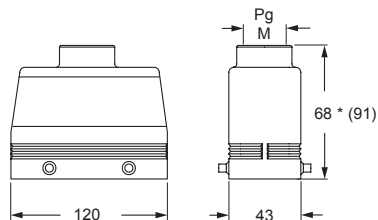
¹⁾ enclosure without adapter, threaded on the body, to be used only with a complete cable gland.

²⁾ can only be used with a complete cable gland (to be purchased separately).

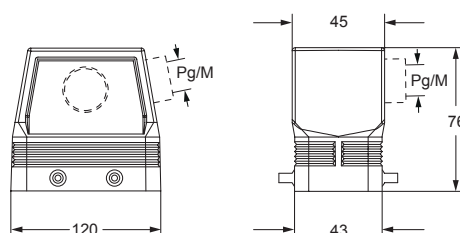
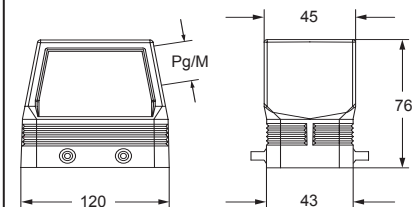
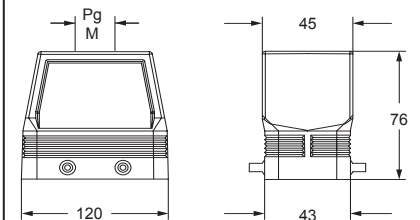
IP degrees are according to the type of lever of the counterpart enclosures.

Alternatively, hoods with pegs may be coupled with fixed enclosures:

- C-TYPE, IP65 or IP66/IP69 stainless steel lever, from page 412 to page 422
- C7, IP66/IP67/IP69 stainless steel lever, page 441
- CV, IP65 or IP66/IP69 stainless steel lever, page 460 and 461

CHO (CAO) and MHO (MAO)**CHV (CAV) and MHV (MAV)**

* 69,5 for Pg 29 - M40 versions

CAF/CFF and MAF/MFF**CFO and MFO****CFV and MFV**

CALUS Type 4/4X/12



insulating cable gland or fittings without gasket



cable gland with O-Ring gasket
IP67 if hoods without adapters coupled with IP67 housings