

Product data sheet

Characteristics

SC2040M200C

All in one, Homeline, CSED, ringed socket, 200A, surface mount, 20 spaces, 40 circuits, 10kA SCCR, no bypass

Product availability : Stock - Normally stocked in distribution facility



Price* : 1,799.00 USD



Main

Product or component type	All-In-One
Range of product	Homeline
Meter socket type	Ringed
Hub type	A-L A

Complementary

Line Rated Current	200 A
Number of Phases	1 phase
Short-circuit current	10 kA
Mounting	Surface
Number of spaces	20
Number of circuits	40
Number of Tandem Breakers	20
Electrical connection	Lugs line side Lugs service ground
Wire Size	AWG 12...AWG 1/0 aluminium)service ground AWG 6...300 kcmil aluminium/copper)line side AWG 14...AWG 1/0 copper)service ground
Tightening torque	Main lugs 250 lb.in, AWG 6...300 kcmil, aluminium/copper Service ground 50 lb.in, AWG 14...AWG 1/0, copper Service ground 50 lb.in, AWG 12...AWG 1/0, aluminium Branch lugs 50 lb.in, AWG 3...AWG 1/0, aluminium/copper Branch lugs 45 lb.in, AWG 6...AWG 4, aluminium/copper Branch lugs 40 lb.in, AWG 8, aluminium/copper Branch lugs 35 lb.in, AWG 14...AWG 10, aluminium/copper Branch lugs 35 lb.in, AWG 12...AWG 10, aluminium/copper

* Price is "List Price" and may be subject to a trade discount – check with your local distributor or retailer for actual price.

Jul 30, 2021

	Cover 10 lb.in
Disconnect	Service disconnect (factory installed)
Disconnect Rating	200 A
Branch Breaker Rating	100 A
Service feed location	OH UG
Bypass type	No bypass
Width	14.95 in (379.73 mm)
Depth	7.12 in (180.85 mm)
Height	34.00 in (863.60 mm)

Ordering and shipping details

Category	00148 - HOMELINE CSED DEVICES
Discount Schedule	DE3A
GTIN	00785901859093
Nbr. of units in pkg.	1
Package weight(Lbs)	51.35 lb(US) (23.292 kg)
Returnability	Yes
Country of origin	MX

Packing Units

Unit Type of Package 1	PCE
Package 1 Height	33.90 in (86.106 cm)
Package 1 width	7.90 in (20.066 cm)
Package 1 Length	15.90 in (40.386 cm)
Unit Type of Package 2	PAL
Number of Units in Package 2	15
Package 2 Weight	785.00 lb(US) (356.07 kg)
Package 2 Height	40.50 in (102.87 cm)
Package 2 width	40.00 in (101.6 cm)
Package 2 Length	48.00 in (121.92 cm)

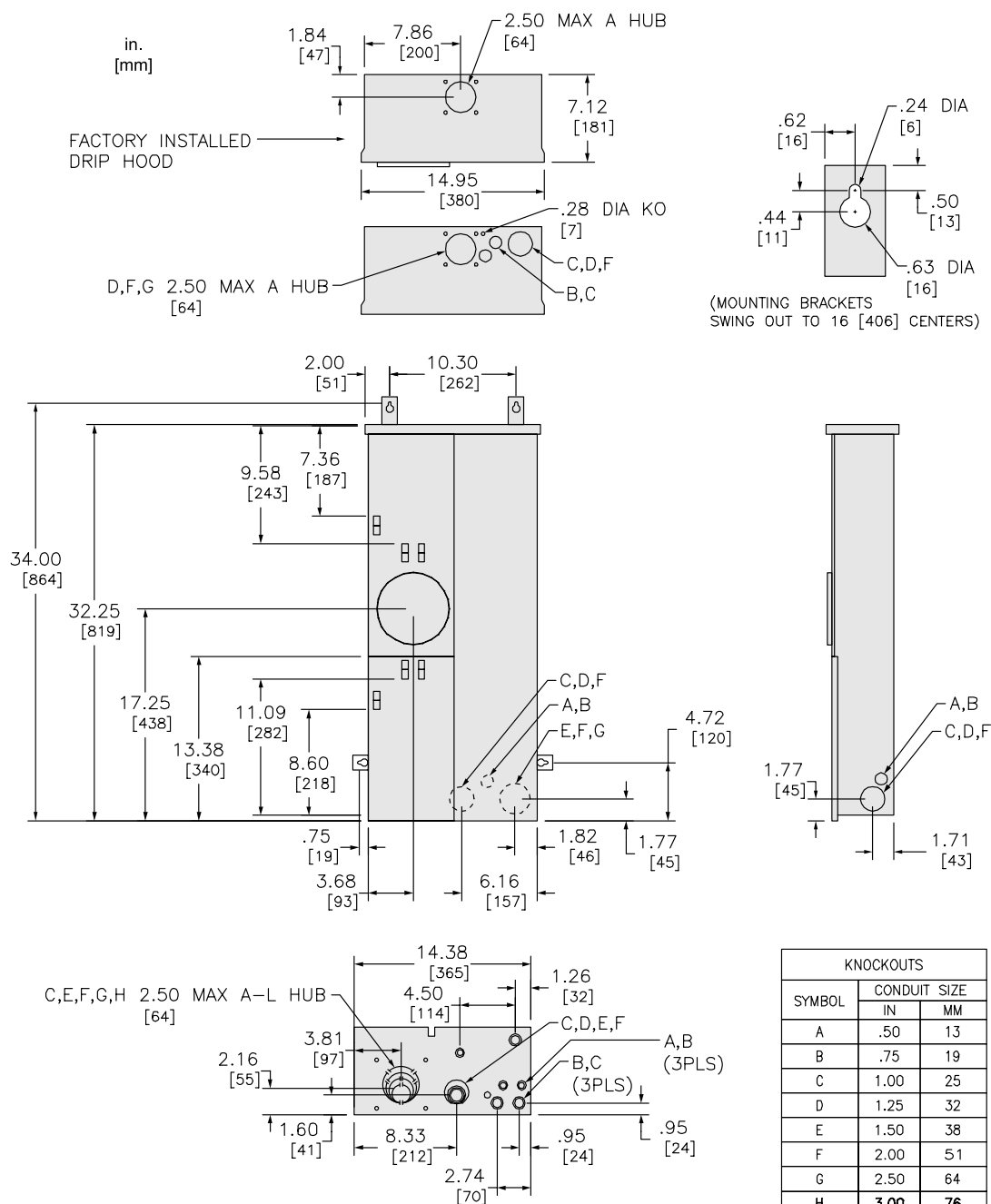
Offer Sustainability

California proposition 65	WARNING: This product can expose you to chemicals including: Lead and lead compounds, which is known to the State of California to cause cancer and birth defects or other reproductive harm. For more information go to www.P65Warnings.ca.gov
REACH Regulation	REACH Declaration
REACH free of SVHC	Yes
EU RoHS Directive	Compliant EU RoHS Declaration
Mercury free	Yes
RoHS exemption information	Yes
China RoHS Regulation	China RoHS declaration Product out of China RoHS scope. Substance declaration for your information.

Contractual warranty

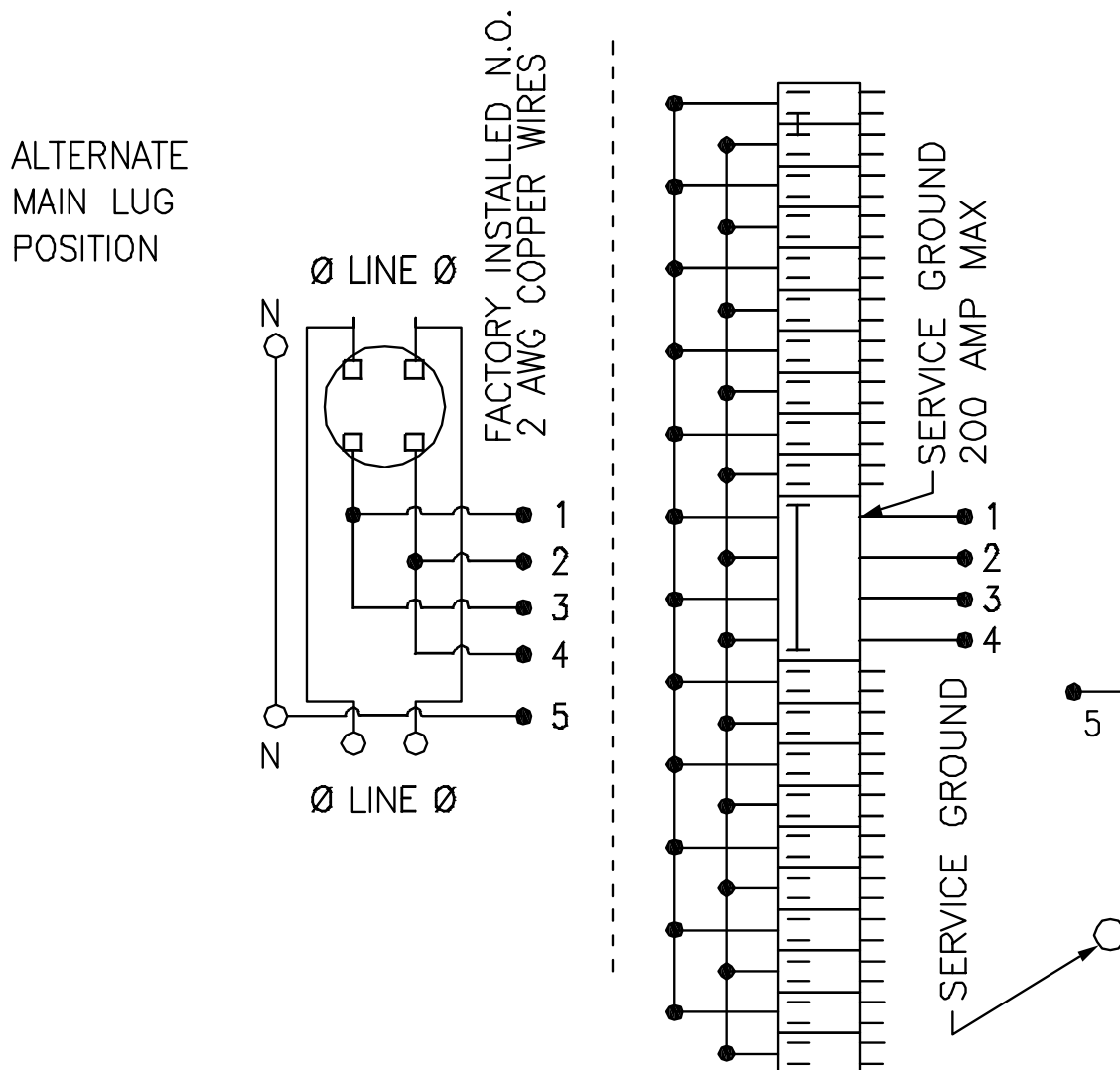
Warranty	18 months
----------	-----------

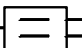
Dimensions



All dimensions are approximate. Also see technical documentation.

Wiring Diagram



-  TWO SINGLE POLE, ONE PLUG-ON SPACE TYPE HOMT OR ONE SINGLE POLE, ONE PLUG-ON SPACE TYPE HOM. TWO POLE TYPE HOM, HOMA OR HOMT MAY PLUG-ON TWO ADJACENT SPACES. BRANCH BREAKER IS LIMITED TO 100A MAX.