

## Product data sheet

### Characteristics

# SC1624M125S

All in one, Homeline, CSED, ringed socket, 125A, surface mount, 16 spaces, 24 circuits, 10kA SCCR, no bypass

Product availability : Stock - Normally stocked in distribution facility



Price\* : 1,518.00 USD



### Main

Product or component type	All-In-One
Range of product	Homeline
Meter socket type	Ringed
Hub type	A

### Complementary

Line Rated Current	125 A
Short-circuit current	10 kA
Mounting	Surface
Number of spaces	16
Number of circuits	24
Number of Tandem Breakers	8
Electrical connection	Lugs line side Lugs service ground
Wire Size	AWG 6...AWG 2/0 aluminium)line side AWG 6...AWG 2/0 copper)line side AWG 6...AWG 2/0 aluminium)service ground AWG 6...AWG 2/0 copper)service ground
Disconnect	Service disconnect (factory installed)
Disconnect Rating	125 A
Branch Breaker Rating	125 A
Service feed location	OH UG
Bypass type	No bypass
Width	14.77 in (375.16 mm)

\* Price is "List Price" and may be subject to a trade discount – check with your local distributor or retailer for actual price.

Jul 29, 2021

Depth	5.20 in (132.08 mm)
Height	26.50 in (673.10 mm)

## Ordering and shipping details

Category	00148 - HOMELINE CSED DEVICES
Discount Schedule	DE3A
GTIN	00785901308829
Nbr. of units in pkg.	1
Package weight(Lbs)	31.50 lb(US) (14.288 kg)
Returnability	Yes
Country of origin	MX

## Packing Units

Unit Type of Package 1	PCE
Package 1 Height	6.20 in (15.75 cm)
Package 1 width	15.10 in (38.35 cm)
Package 1 Length	26.40 in (67.06 cm)

## Offer Sustainability

California proposition 65	WARNING: This product can expose you to chemicals including: Lead and lead compounds, which is known to the State of California to cause cancer and birth defects or other reproductive harm. For more information go to <a href="http://www.P65Warnings.ca.gov">www.P65Warnings.ca.gov</a>
REACH Regulation	<a href="#">REACH Declaration</a>
REACH free of SVHC	Yes
EU RoHS Directive	Compliant <a href="#">EU RoHS Declaration</a>
Mercury free	Yes
RoHS exemption information	<a href="#">Yes</a>
China RoHS Regulation	<a href="#">China RoHS declaration</a> Product out of China RoHS scope. Substance declaration for your information.

## Contractual warranty

Warranty	18 months
----------	-----------

2.50 MAX A HUB  
[64]  
(2 LOCATIONS)  
SUPPLIED WITH CLOSING PLATE

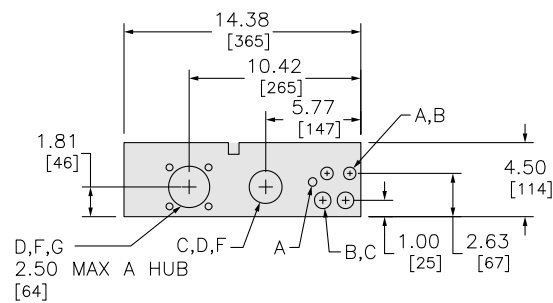
1.82 [46] 6.81 [173] 4.80 [122] 1.75 [44] 14.77 [375]

2.23 [57] 10.30 [262] 5.20 [132] 4.80 [122]

26.50 [673] 25.12 [638] 14.25 [362] 10.75 [273] 8.00 [203] 6.00 [152] 3.68 [94] 5.53 [141] 2.12 [54] C,D,F

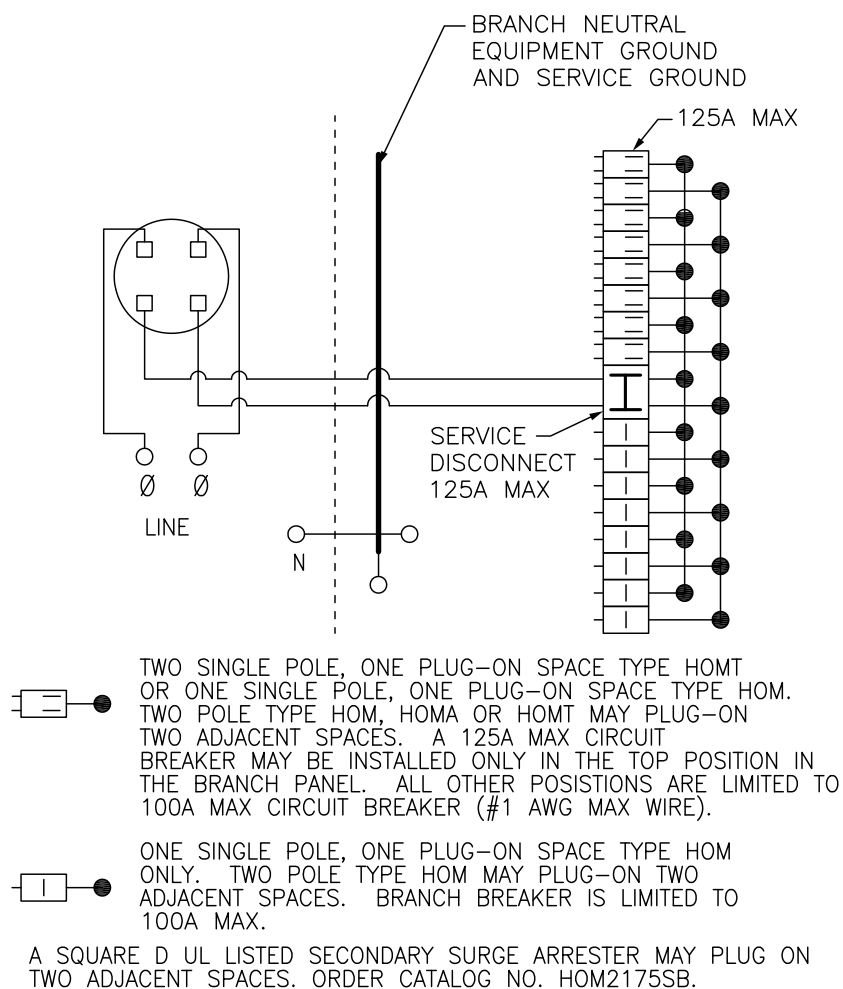
.62 [16] .24 DIA [6] .50 [13] .44 [11] 1.88 [48] .63 DIA [16]

in mm



KNOCKOUTS		
SYMBOL	CONDUIT SIZE	
	IN	MM
A	.50	13
B	.75	19
C	1.00	25
D	1.25	32
E	1.50	38
F	2.00	51
G	2.50	64

## Wiring Diagram



SC1624M100S  
SC1624M125S