

RC12L200C

Meter mains, Homeline, combination service entrance, ringless socket, 200A, surface mount, maximum 12 spaces, no bypass

Product availability : Stock - Normally stocked in distribution facility



Price* : 1,419.00 USD



Main

Product or component type	Meter Mains
Range of product	Homeline

Complementary

Line Rated Current	200 A
Short-circuit current	10 kA
Network number of phases	1
Meter socket type	Ringless
Mounting	Surface
Number of spaces	12
Number of circuits	0
Number of Tandem Breakers	0
Hub type	A
Electrical connection	Lugs line side Lugs service ground
Wire Size	AWG 6...350 kcmil aluminium/copper)line side AWG 12...AWG 2/0 aluminium/copper)service ground
Tightening torque	Main lugs 250 lb.in, AWG 6...350 kcmil, aluminium/copper Lugs 250 lb.in, AWG 4...300 kcmil, aluminium/copper Service ground 50 lb.in, AWG 14...AWG 2/0, copper Service ground 50 lb.in, AWG 12...AWG 2/0, aluminium Branch lugs 35 lb.in, AWG 6...AWG 4, aluminium/copper Branch lugs 25 lb.in, AWG 8, aluminium/copper Branch lugs 20 lb.in, AWG 14...AWG 10, copper Branch lugs 20 lb.in, AWG 12...AWG 10, aluminium Cover 10 lb.in
Disconnect	Service disconnect (ordered separately)

* Price is "List Price" and may be subject to a trade discount – check with your local distributor or retailer for actual price.

Main Breaker Rating	200 A
Service feed location	OH UG
Bypass type	No bypass
Height	26.16 in (664.46 mm)
Width	14.89 in (378.21 mm)
Depth	6.10 in (154.94 mm)

Environment

Product certifications	UL E-6294
------------------------	-----------

Ordering and shipping details

Category	00048 - HOM METER MAINS
Discount Schedule	DE3A
GTIN	00785901863984
Nbr. of units in pkg.	1
Package weight(Lbs)	40.58 lb(US) (18.41 kg)
Returnability	Yes
Country of origin	MX

Packing Units

Unit Type of Package 1	PCE
Package 1 Height	15.30 in (38.862 cm)
Package 1 width	8.00 in (20.32 cm)
Package 1 Length	33.60 in (85.344 cm)
Unit Type of Package 2	PAL
Number of Units in Package 2	21
Package 2 Weight	853.00 lb(US) (386.914 kg)
Package 2 Height	40.00 in (101.6 cm)
Package 2 width	40.00 in (101.6 cm)
Package 2 Length	48.00 in (121.92 cm)

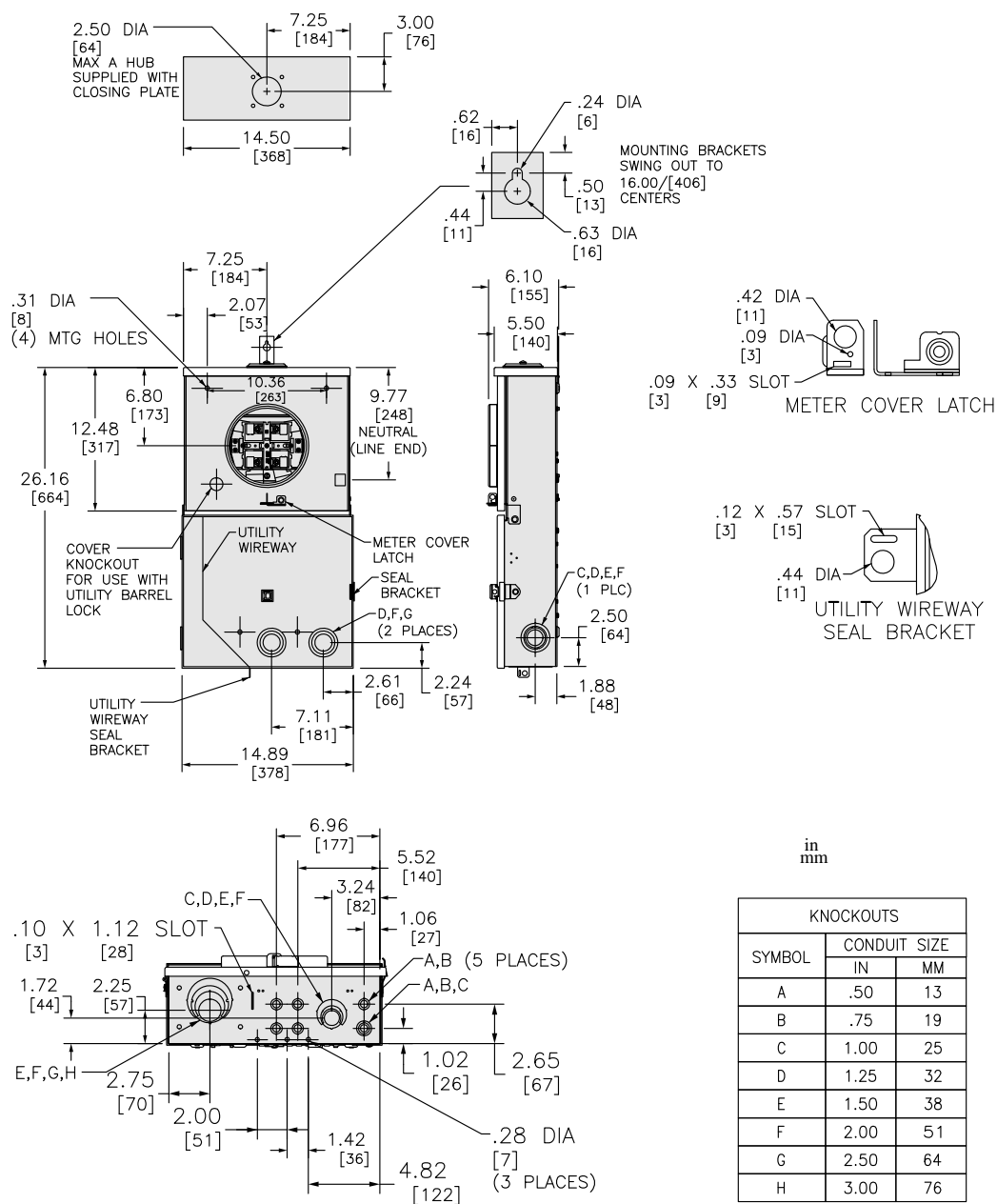
Offer Sustainability

California proposition 65	WARNING: This product can expose you to chemicals including: Lead and lead compounds, which is known to the State of California to cause cancer and birth defects or other reproductive harm. For more information go to www.P65Warnings.ca.gov
REACH Regulation	REACH Declaration
REACH free of SVHC	Yes
EU RoHS Directive	Compliant EU RoHS Declaration
Mercury free	Yes
RoHS exemption information	Yes
China RoHS Regulation	China RoHS declaration Product out of China RoHS scope. Substance declaration for your information.

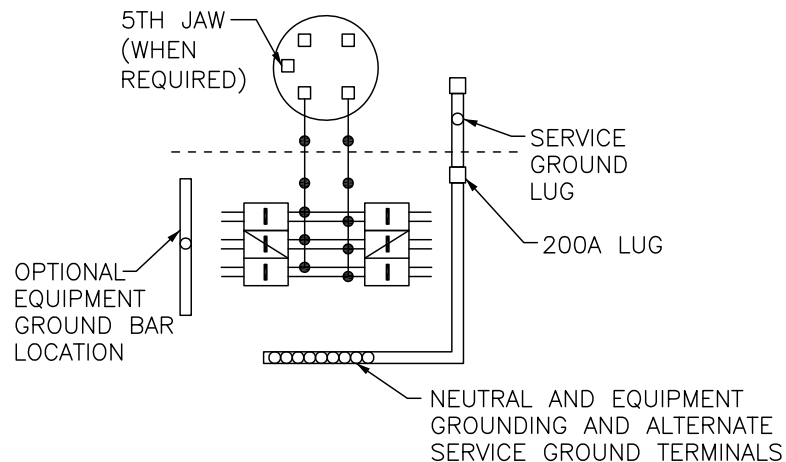
Contractual warranty

Warranty	18 months
----------	-----------

Dimensions



Wiring Diagram



TWO POLE TYPE QO OR QOA (15–100A) MAY PLUG ON TWO ADJACENT SPACES. TWO POLE TYPE QOC (150–200A) MAY PLUG ON FOUR ADJACENT SPACES ON RIGHT SIDE ONLY.

USE 15–100A AND 15–200A BRANCH BREAKERS ONLY.
INSTALL NO MORE THAN SIX CIRCUIT BREAKERS.

TWO POLE TYPE HOM (15–100A) MAY PLUG ON TWO ADJACENT SPACES. TWO POLE TYPE HOMA (150–200A) MAY PLUG ON FOUR ADJACENT SPACES ON RIGHT SIDE ONLY.

USE 15–100A AND 15–200A BRANCH BREAKERS ONLY.
INSTALL NO MORE THAN SIX CIRCUIT BREAKERS

A SQUARE D UL LISTED SECONDARY SURGE ARRESTER MAY PLUG ON TWO ADJACENT SPACES. ORDER CAT. NO. HOM2175SB

A SQUARE D UL LISTED SECONDARY SURGE ARRESTER MAY PLUG ON TWO ADJACENT SPACES. ORDER CAT. NO. QO2175SB