

# Product data sheet

## Characteristics

# QO816L100DSCU

Load center, QO, 1 phase, 8 spaces, 16 circuits, 100A fixed main lugs, NEMA1, door surface cover, Cu bus, UL

Product availability : Stock - Normally stocked in distribution facility



Price\* : 174.00 USD



### Main

Marketing Trade Name	QO
Product Type	Load Center
Cover Type	Surface cover with door

### Complementary

Tightening Torque	Main lugs 50 lb.in, AWG 8, aluminium/copper Main lugs 50 lb.in, AWG 6...AWG 1/0, aluminium/copper
Load Center Type	Main lugs
Rated Current	100 A
Number of Spaces	8
Max Short Circuit Current Rating	10 kA
Maximum Number of Single Pole Circuits	16
Maximum Number of Tandem Breakers	8
Number of Phases	1 phase
Voltage Rating	120/240 V AC
Wire Size	AWG 8...AWG 1 aluminium/copper
Ground Bar	Grounding bar (ordered separately)
Electrical Connection	Lugs
Wiring Configuration	3-wire
Busbar Material	Tin plated copper busbar
Enclosure Material	Welded sheet steel
Surface Finish	Baked enamel Gray

\* Price is "List Price" and may be subject to a trade discount – check with your local distributor or retailer for actual price.

Box Number	4
Height	12.56 in (319 mm)
Width	8.90 in (226 mm)

## Environment

Enclosure Rating	NEMA 1 indoor
Ambient Air Temperature for Operation	23 °F (-5 °C) 104 °F (40 °C)
Product Certifications	UL Listed

## Ordering and shipping details

Category	00101 - QO 1PH LC,2-8CKT,NEMA 1,3R
Discount Schedule	DE3A
GTIN	00785901626398
Nbr. of units in pkg.	1
Package weight(Lbs)	8.62 lb(US) (3.91 kg)
Returnability	Yes
Country of origin	MX

## Packing Units

Package 1 Height	4.50 in (11.430 cm)
Package 1 width	10.80 in (27.432 cm)
Package 1 Length	14.50 in (36.830 cm)

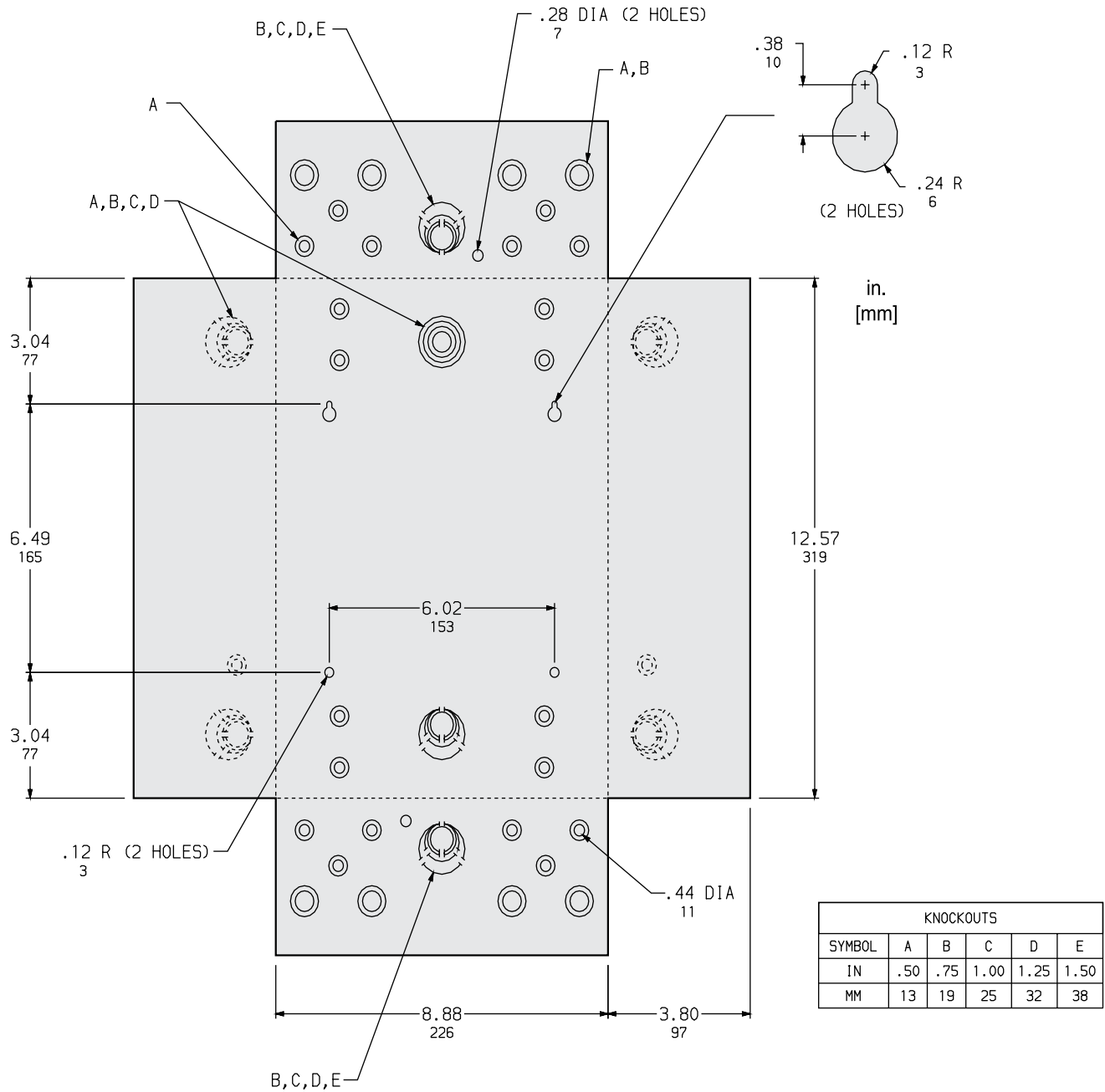
## Offer Sustainability

Sustainable offer status	Green Premium product
California proposition 65	WARNING: This product can expose you to chemicals including: Lead and lead compounds, which is known to the State of California to cause cancer and birth defects or other reproductive harm. For more information go to <a href="http://www.P65Warnings.ca.gov">www.P65Warnings.ca.gov</a>
RECh Regulation	<a href="#">RECh Declaration</a>
RECh free of SVHC	Yes
EU RoHS Directive	Compliant <a href="#">EU RoHS Declaration</a>
Toxic heavy metal free	Yes
Mercury free	Yes
RoHS exemption information	<a href="#">Yes</a>
China RoHS Regulation	<a href="#">China RoHS declaration</a> Pro-active China RoHS declaration (out of China RoHS legal scope)
Environmental Disclosure	<a href="#">Product Environmental Profile</a>

## Contractual warranty

Warranty	18 months
----------	-----------

Dimensions



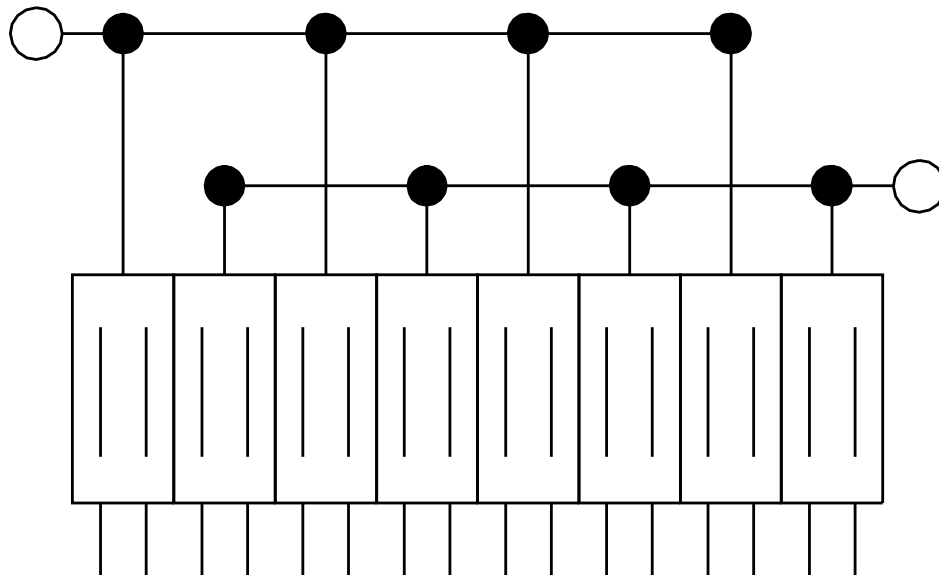
All dimensions are approximate. Also see technical documentation.

---

Wiring Diagram

---

S/N



QO816L100F  
QO816L100S  
QO816L100DF  
QO816L100DS  
QO816L100DFCU  
QO816L100DSCU