



Price* : 1,905.00 USD



Main

Product or component type	All-In-One
Range of product	QO
Meter socket type	Ringless
Hub type	A

Complementary

Line Rated Current	200 A
Short-circuit current	22 kA
Mounting	Surface
Number of spaces	24
Number of circuits	42
Number of Tandem Breakers	18
Electrical connection	Lugs line side Lugs service ground
Wire Size	AWG 6...350 kcmil aluminium)line side AWG 6...350 kcmil copper)line side AWG 8...AWG 2/0 aluminium)service ground AWG 8...AWG 2/0 copper)service ground
Tightening torque	Main lugs 250 lb.in, AWG 6...350 kcmil, aluminium/copper Service ground 50 lb.in, AWG 8...AWG 2/0, aluminium/copper Branch lugs 50 lb.in, AWG 3...AWG 1/0, aluminium/copper Branch lugs 45 lb.in, AWG 6...AWG 4, aluminium/copper Branch lugs 40 lb.in, AWG 8, aluminium/copper Branch lugs 35 lb.in, AWG 14...AWG 10, aluminium/copper Branch lugs 35 lb.in, AWG 12...AWG 10, aluminium/copper Cover 10 lb.in
Disconnect	Service disconnect (factory installed)
Disconnect Rating	200 A
Branch Breaker Rating	200 A
Service feed location	OH

* Price is "List Price" and may be subject to a trade discount – check with your local distributor or retailer for actual price.

Jul 30, 2021

	UG
Bypass type	Horn bypass
Width	14.12 in (358.65 mm)
Depth	5.07 in (128.78 mm)
Height	35.13 in (892.30 mm)

Ordering and shipping details

Category	00122-QO CSED DEVICES
Discount Schedule	DE3A
GTIN	00785901396789
Nbr. of units in pkg.	1
Package weight(Lbs)	43.72 lb(US) (19.831 kg)
Returnability	Yes
Country of origin	MX

Packing Units

Unit Type of Package 1	PCE
Package 1 Height	5.70 in (14.478 cm)
Package 1 width	15.00 in (38.1 cm)
Package 1 Length	36.70 in (93.218 cm)

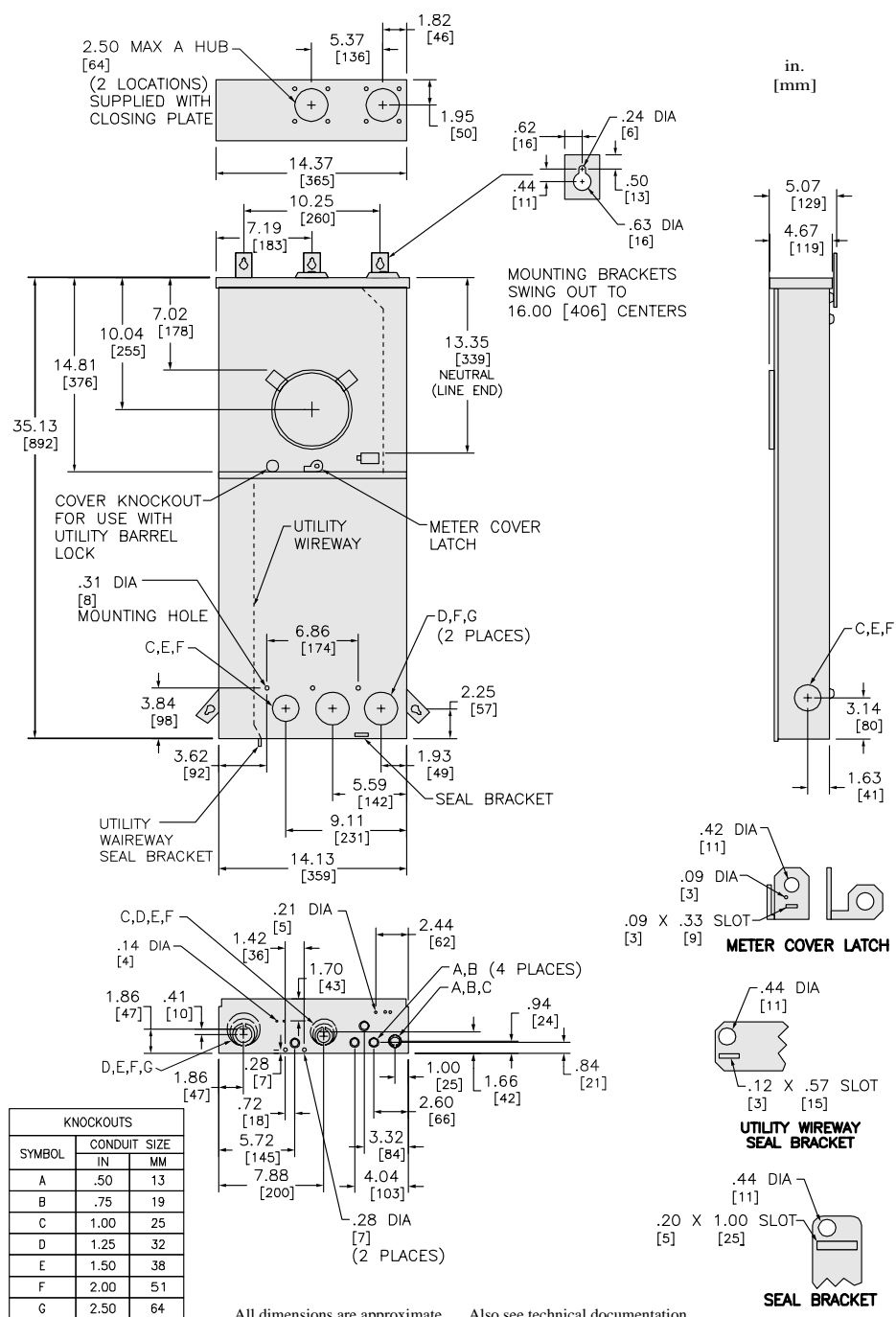
Offer Sustainability

California proposition 65	WARNING: This product can expose you to chemicals including: lead and lead compounds, which is known to the State of California to cause cancer and birth defects or other reproductive harm. For more information go to www.P65Warnings.ca.gov
REACH Regulation	REACH Declaration
REACH free of SVHC	Yes
EU RoHS Directive	Compliant EU RoHS Declaration
Mercury free	Yes
RoHS exemption information	Yes
China RoHS Regulation	China RoHS declaration Product out of China RoHS scope. Substance declaration for your information.

Contractual warranty

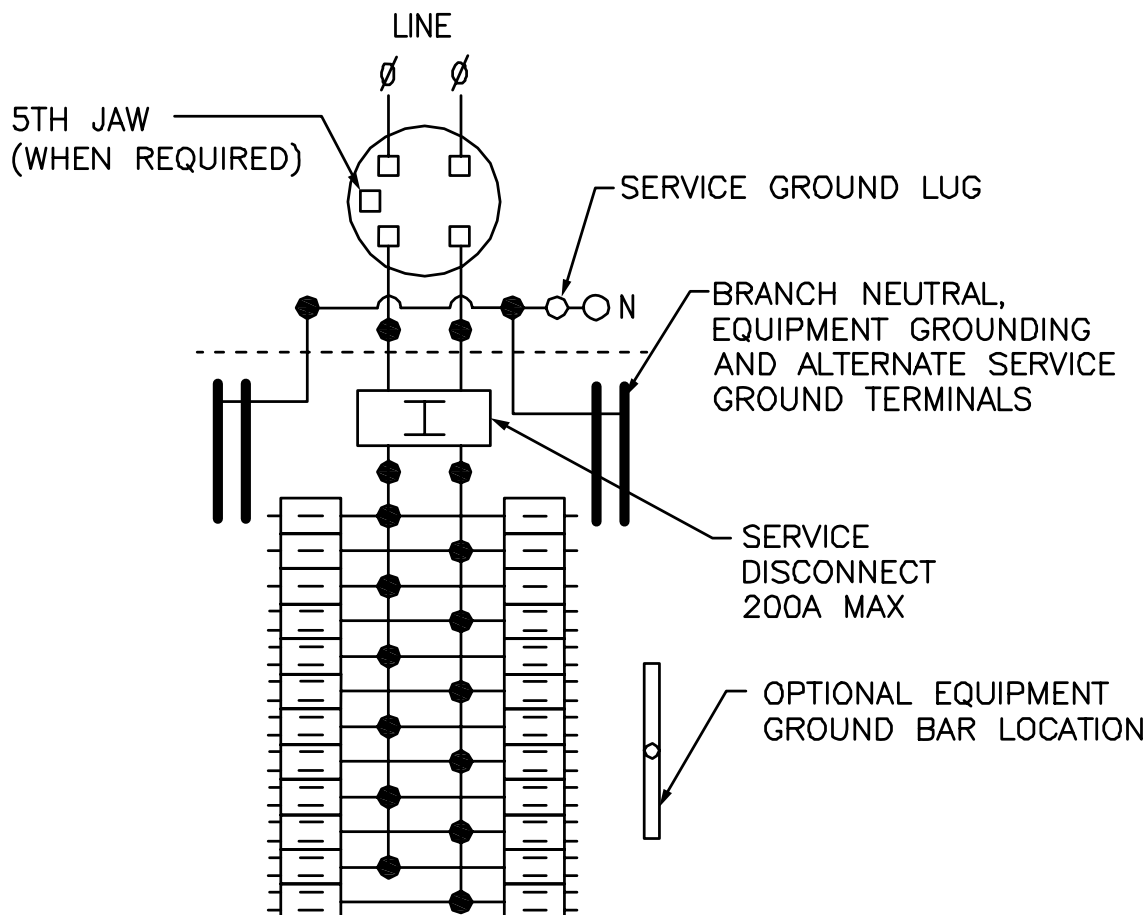
Warranty	18 months
----------	-----------

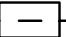
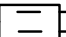
Dimensions



All dimensions are approximate. Also see technical documentation.

Wiring Diagram



-  ONE SINGLE POLE, ONE PLUG-ON SPACE TYPE QO. TWO POLE TYPES QO OR QOA (10-100A) MAY PLUG-ON TWO ADJACENT SPACES. TWO POLE TYPE QOC (150-200A) MAY PLUG ON FOUR ADJACENT SPACES. **USE 10-100A AND 150-200A BRANCH BREAKERS ONLY.**
-  TWO SINGLE POLE, ONE PLUG-ON SPACE TYPE QOT OR ONE SINGLE POLE TYPE QO. TWO POLE TYPE QO OR QOA (10-100A) MAY PLUG-ON TWO ADJACENT SPACES. TWO POLE TYPE QOC (150-200A) MAY PLUG ON FOUR ADJACENT SPACE. **USE 10-100A AND 150-200A BRANCH BREAKERS ONLY.**

A SQUARE D UL LISTED SECONDARY SURGE ARRESTER MAY PLUG ON TWO ADJACENT SPACES. ORDER CATALOG NO. QO2175SB.