

Product data sheet

Characteristics

NF430L1C

Panelboard interior, NF, main lugs, 125A, Cu bus, 30 pole spaces, 3 phase, 4 wire, 600Y/347VAC max

Product availability : Stock - Normally stocked in distribution facility



Price* : 2,162.00 USD



Main

Panelboard Type	Main lugs
Branch Circuit Breaker Type	EDB/EDG/EDJ
Busbar Material	Copper

Complementary

Number of spaces	30
Enclosure Nominal Height	32 in (812.80 mm) 44 in (1117.60 mm)
Enclosure Nominal Width	20 in (508.00 mm)
Enclosure Nominal Depth	5.75 in (146.05 mm) NEMA 1 6.5 in (165.10 mm) NEMA 3R/5/12
Line Rated Current	125 A
[Iu] rated interrupted current	65 kA
Wiring configuration	4-wire
Number of Phases	3 phase
Voltage Rating	600Y/347 V AC
Connections - terminals	Lug line AWG 6...AWG 2/0 aluminium/copper Lug neutral AWG 6...AWG 2/0 aluminium
Tightening torque	40.01...50.01 lbf.in (4.52...5.65 N.m) 0.02...0.10 in ² (13.30...67.43 mm ²) (AWG 6...AWG 2/0) 100.01 lbf.in (11.3 N.m) 0.02...0.10 in ² (13.30...67.43 mm ²) (AWG 6...AWG 2/0) 274.99 lbf.in (31.07 N.m) 0.02...0.27 in ² (13.30...177.3 mm ²) (AWG 6...350 kcmil) 274.99 lbf.in (31.07 N.m) 0.02...0.20 in ² (13.30...126.7 mm ²) (AWG 6...250 kcmil) 274.99 lbf.in (31.07 N.m) 0.17...0.24 in ² (107.2...152 mm ²) (AWG 4...300 kcmil)
Height	27 in (685.80 mm)
Width	10.44 in (265.18 mm)

* Price is "List Price" and may be subject to a trade discount – check with your local distributor or retailer for actual price.

Environment

Standards	CSA C22.2 UL 67
-----------	--------------------

Ordering and shipping details

Category	08350 - NF MLO INTERIOR RTA
Discount Schedule	PE1A
GTIN	00785901871446
Nbr. of units in pkg.	1
Package weight(Lbs)	19.95 lb(US) (9.049 kg)
Returnability	Yes
Country of origin	MX

Packing Units

Unit Type of Package 1	PCE
Package 1 Height	6.20 in (15.748 cm)
Package 1 width	14.00 in (35.56 cm)
Package 1 Length	32.20 in (81.788 cm)
Unit Type of Package 2	PAL
Number of Units in Package 2	15
Package 2 Weight	325.00 lb(US) (147.417 kg)
Package 2 Height	35.50 in (90.17 cm)
Package 2 width	40.00 in (101.6 cm)
Package 2 Length	48.00 in (121.92 cm)

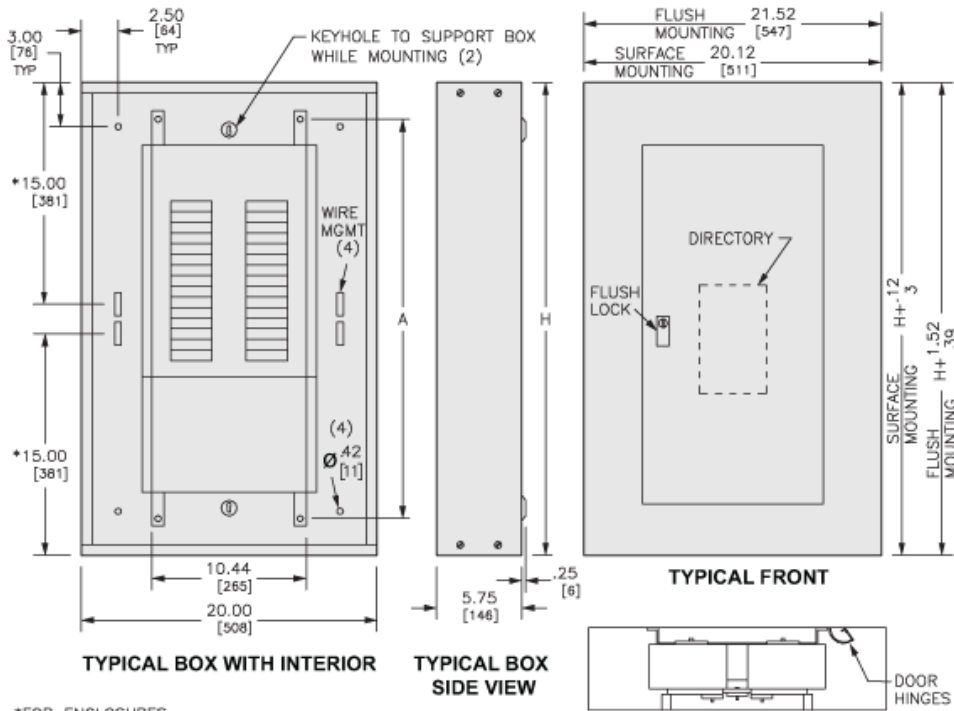
Offer Sustainability

Sustainable offer status	Green Premium product
California proposition 65	WARNING: This product can expose you to chemicals including: Nickel compounds, which is known to the State of California to cause cancer, and Bisphenol A (BPA), which is known to the State of California to cause birth defects or other reproductive harm. For more information go to www.P65Warnings.ca.gov
REACH Regulation	REACH Declaration
REACH free of SVHC	Yes
EU RoHS Directive	Compliant EU RoHS Declaration
Toxic heavy metal free	Yes
Mercury free	Yes
RoHS exemption information	Yes
China RoHS Regulation	China RoHS declaration Pro-active China RoHS declaration (out of China RoHS legal scope)
Environmental Disclosure	Product Environmental Profile

Contractual warranty

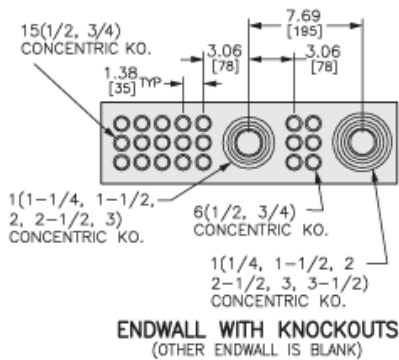
Warranty	18 months
----------	-----------

Approximate Dimensions



*FOR ENCLOSURES WHERE DIMENSION "H" IS 26.00/[660], THIS DIMENSION IS 11.00/[279]

in.
[mm]



ENDWALL WITH KNOCKOUTS
(OTHER ENDWALL IS BLANK)

MAXIMUM MAIN LUG AMPERE RATING	MAXIMUM NUMBER OF CIRCUITS	H		A	
		IN	MM	IN	MM
125	18	26.00	660	21.00	533
	30	32.00	813	27.00	686
	42	38.00	965	33.00	838
	54	44.00	1118	39.00	991
250	30	38.00	965	33.00	838
	42	44.00	1118	39.00	991
	54	50.00	1270	45.00	1143
	66	62.00	1575	57.00	1448
125 WITH SUB-FEED LUGS	18	26.00	660	21.00	533
	30	32.00	813	27.00	686
	42	38.00	965	33.00	838
	54	44.00	1118	39.00	991
250 WITH SUB-FEED LUGS	30	38.00	965	33.00	838
	42	44.00	1118	39.00	991
	54	50.00	1270	45.00	1143
	66	62.00	1575	57.00	1448
125 WITH FEED-THRU LUGS	18	32.00	813	27.00	686
	30	38.00	965	33.00	838
	42	44.00	1118	39.00	991
	54	50.00	1270	45.00	1143
250 WITH FEED-THRU LUGS	30	50.00	1270	45.00	1143
	42	56.00	1422	51.00	1295
	54	62.00	1575	57.00	1448
	66	74.00	1880	69.00	1753
250 WITH SUB-FEED BREAKERS	30	56.00	1422	51.00	1295
	42	62.00	1575	57.00	1448
	54	68.00	1727	63.00	1600
	66	74.00	1880	69.00	1753