

# H368R

Safety switch, heavy duty, fusible, 1200A, 3 poles,  
500 hp, 600 VAC/DC, NEMA 3R

Product availability : Stock - Normally stocked in distribution facility



Price\* : 20,009.00 USD



## Main

Product	Single Throw Safety Switch
Duty Rating	Heavy duty
Device application	Heavy application
Disconnect Type	Fusible disconnect
Factory Installed Neutral	None
Phase	3 phase
Number of Poles	3
Current Rating	1200 A
Voltage Rating	600 V AC/DC
Enclosure Rating	NEMA 3R galvanized steel
Maximum Horse Power Rating	200 hp 480 V at AC 50-60 Hz for 3 phase conforming to NEC 240.6 500 hp 480 V at AC 50-60 Hz for 3 phase conforming to NEC 430.52 250 hp 600 V at AC 50-60 Hz for 3 phase conforming to NEC 240.6 500 hp 600 V at AC 50-60 Hz for 3 phase conforming to NEC 430.52 50 hp 600 V at DC

## Complementary

Short Circuit Current Rating	200 kA maximum L
Fuse type	L
Mounting Type	Surface
Electrical Connection	Lugs
Wiring configuration	4-wire (3PH + N)
Wire Size	AWG 3/0...750 kcmil copper or aluminium
Tightening torque	375 lbf.in (42.37 N.m) 0.13...0.59 in <sup>2</sup> (85.01...380 mm <sup>2</sup> ) (AWG 3/0...750 kcmil)
Depth	17.75 in (450.85 mm)
Width	36.62 in (930.15 mm)

\* Price is "List Price" and may be subject to a trade discount – check with your local distributor or retailer for actual price.

Height	69.13 in (1755.90 mm)
Net Weight	373.02 lb(US) (169.2 kg)

## Environment

Certifications	UL listed file E2875
----------------	----------------------

## Ordering and shipping details

Category	00054 - H&HU SW,NEMA3R,400-1200A
Discount Schedule	DE1
GTIN	00785901259329
Nbr. of units in pkg.	1
Package weight(Lbs)	373.00 lb(US) (169.19 kg)
Returnability	Yes
Country of origin	MX

## Packing Units

Unit Type of Package 1	PCE
Package 1 Height	73.82 in (187.5 cm)
Package 1 width	30.00 in (76.2 cm)
Package 1 Length	37.99 in (96.5 cm)

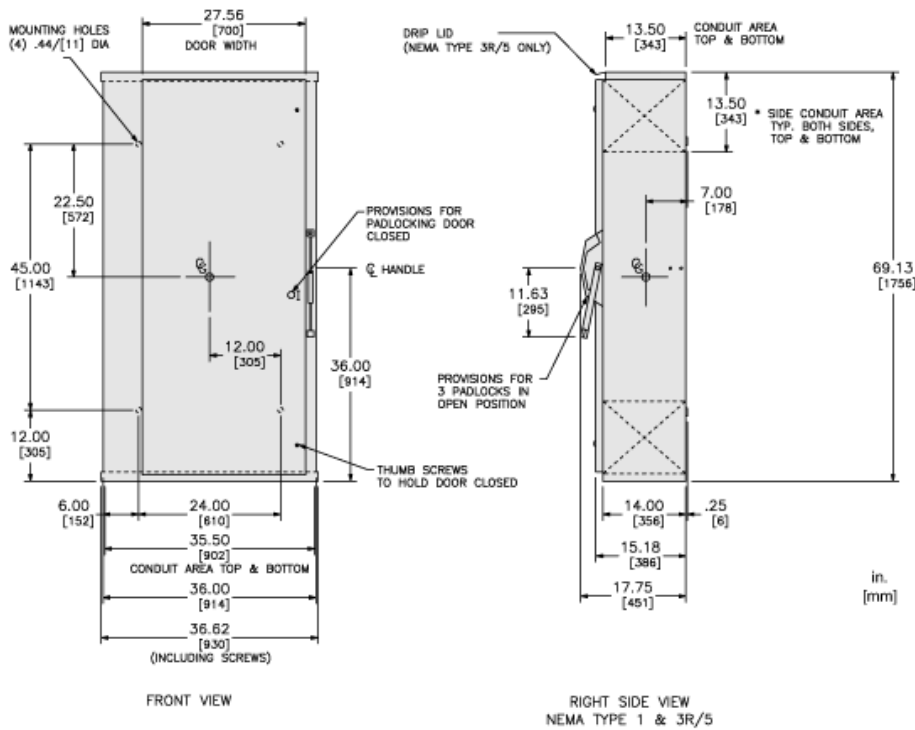
## Offer Sustainability

Sustainable offer status	Green Premium product
California proposition 65	WARNING: This product can expose you to chemicals including: Lead and lead compounds, which is known to the State of California to cause cancer and birth defects or other reproductive harm. For more information go to <a href="http://www.P65Warnings.ca.gov">www.P65Warnings.ca.gov</a>
REACH Regulation	<a href="#">REACH Declaration</a>
EU RoHS Directive	Compliant <a href="#">EU RoHS Declaration</a>
Mercury free	Yes
RoHS exemption information	<a href="#">Yes</a>
China RoHS Regulation	<a href="#">China RoHS declaration</a> Product out of China RoHS scope. Substance declaration for your information.
Environmental Disclosure	<a href="#">Product Environmental Profile</a>
PVC free	Yes
Halogen content performance	Halogen free plastic parts product

## Contractual warranty

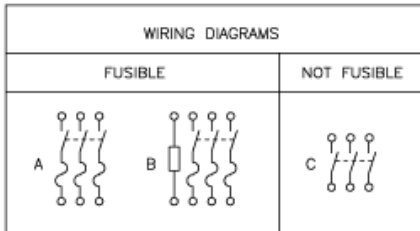
Warranty	18 months
----------	-----------

Approximate Dimensions



CATALOG NUMBER	VOLTAGE RATINGS	WIRING DIAG.	3 PHASE HORSEPOWER RATINGS						DC HORSEPOWER RATINGS			
			240VAC		480VAC		600VAC		250VDC		600VDC	
			STD	MAX.	STD	MAX.	STD	MAX.	STD	MAX.	STD	MAX.
H32B	240VAC;250VDC	A	100	250	-	-	-	-	50	50	-	-
H32BR	240VAC;250VDC	A	100	250	-	-	-	-	50	50	-	-
H32BN	240VAC;250VDC	B	100	250	-	-	-	-	50	50	-	-
H32BNR	240VAC;250VDC	B	100	250	-	-	-	-	50	50	-	-
H36B	600VAC;600VDC	A	100	250	200	500	250	500	-	-	50	50
H36BR	600VAC;600VDC	A	100	250	200	500	250	500	-	-	50	50
H36BN	600VAC;600VDC	B	100	250	200	500	250	500	-	-	50	50
H36BNR	600VAC;600VDC	B	100	250	200	500	250	500	-	-	50	50
HU36B	600VAC;600VDC	C	100	100	-	500	-	500	-	-	50	50
HU36BR	600VAC;600VDC	C	100	100	-	500	-	500	-	-	50	50

Wiring Diagrams



TERMINAL LUGS			
AMPERES	MAX. WIRE	MIN. WIRE	TYPE
1200	(4)750 KCMIL	(4)#3/0 AWG	75°C AL OR CU

FUSE PROVISIONS			
AMPERES	TYPE	AMPERES	TYPE
1200	CLASS "L"	800	CLASS "L"