

Product data sheet

Characteristics

H324NRB

Safety switch, heavy duty, fusible, 200A, 3 poles, 60 hp, 240 VAC/250 VDC, NEMA 3R, bolt-on hub, neutral

Product availability : Stock - Normally stocked in distribution facility



Price* : 1,748.00 USD



Main

Product	Single Throw Safety Switch
Duty Rating	Heavy duty
Device application	Heavy application
Disconnect Type	Fusible disconnect
Factory Installed Neutral	Neutral (factory installed)
Phase	3 phase
Number of Poles	3
Current Rating	200 A
Voltage Rating	250 V DC 240 V AC
Enclosure Rating	NEMA 3R galvanized steel
Maximum Horse Power Rating	15 hp 240 V at AC 50-60 Hz for 1 phase conforming to NEC 240.6 25 hp 240 V at AC 50-60 Hz for 3 phase conforming to NEC 240.6 60 hp 240 V at AC 50-60 Hz for 3 phase conforming to NEC 430.52 40 hp 250 V at DC

Complementary

Short Circuit Current Rating	10 kA H or K 200 kA R, J or L
Fuse type	H or K R, J or L
Mounting Type	Surface
Electrical Connection	Lugs
Wiring configuration	4-wire (3PH + G)
Wire Size	AWG 6...250 kcmil copper or aluminium

* Price is "List Price" and may be subject to a trade discount – check with your local distributor or retailer for actual price.

Jul 30, 2021

Tightening torque	275 lbf.in (31.07 N.m) 0.02...0.20 in² (13.3...127 mm²) (AWG 6...250 kcmil)
Depth	8.5 in (215.90 mm)
Width	17.25 in (438.15 mm)
Height	29.25 in (742.95 mm)
Net Weight	56.50 lb(US) (25.63 kg)

Environment

Certifications	UL listed file E2875
----------------	----------------------

Ordering and shipping details

Category	00009 - H&HU SW,2&3P,N3R,30-200A
Discount Schedule	DE1
GTIN	00785901480594
Nbr. of units in pkg.	1
Package weight(Lbs)	45.36 lb(US) (20.575 kg)
Returnability	Yes
Country of origin	US

Packing Units

Unit Type of Package 1	PCE
Package 1 Height	8.20 in (20.828 cm)
Package 1 width	19.30 in (49.022 cm)
Package 1 Length	31.00 in (78.74 cm)

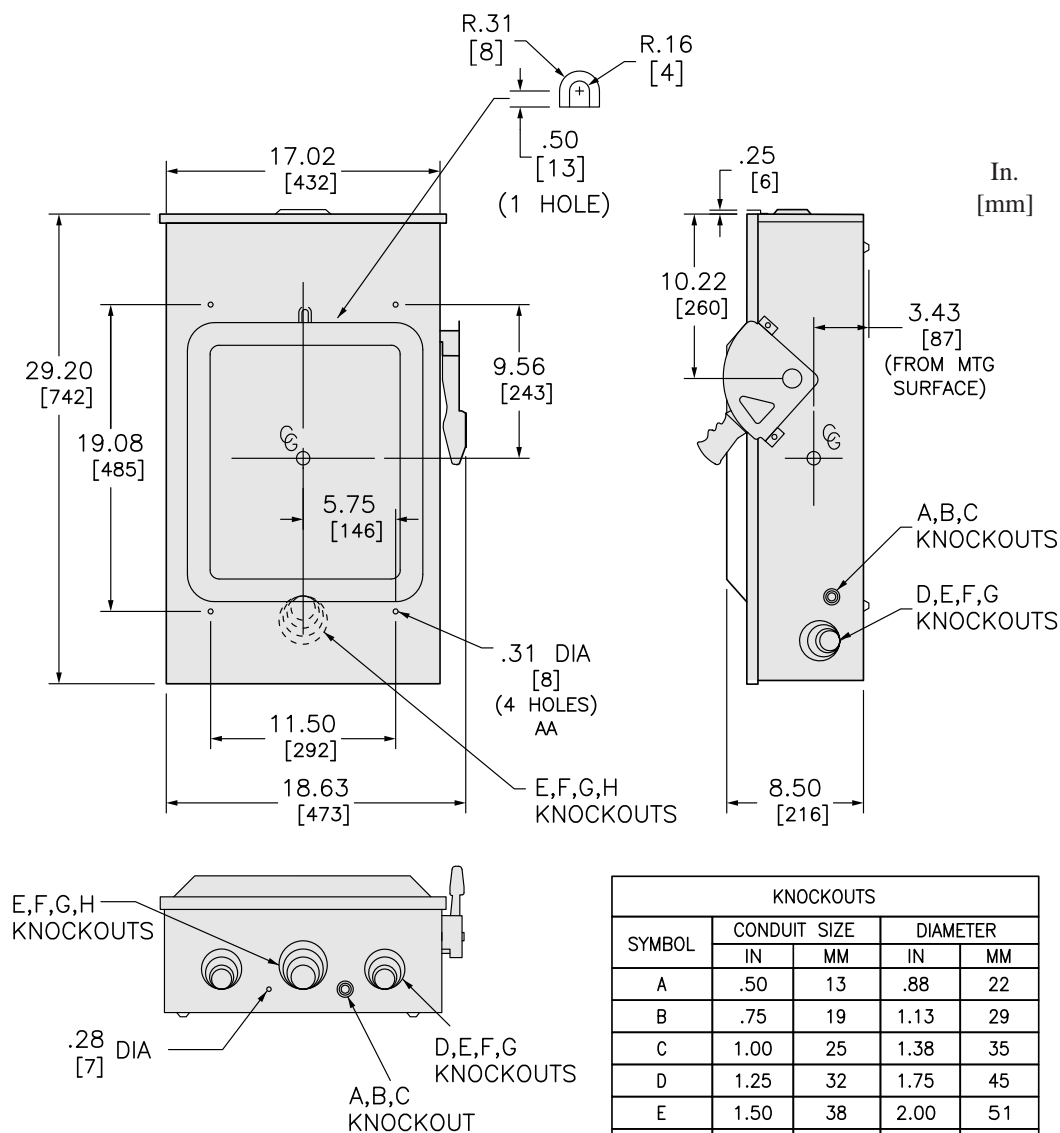
Offer Sustainability

Sustainable offer status	Green Premium product
California proposition 65	WARNING: This product can expose you to chemicals including: Lead and lead compounds, which is known to the State of California to cause cancer and birth defects or other reproductive harm. For more information go to www.P65Warnings.ca.gov
REACH Regulation	REACH Declaration
REACH free of SVHC	Yes
EU RoHS Directive	Compliant EU RoHS Declaration
Toxic heavy metal free	Yes
Mercury free	Yes
RoHS exemption information	Yes
China RoHS Regulation	China RoHS declaration Pro-active China RoHS declaration (out of China RoHS legal scope)
Environmental Disclosure	Product Environmental Profile
PVC free	Yes

Contractual warranty

Warranty	18 months
----------	-----------

Dimensions

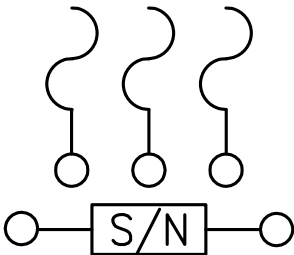
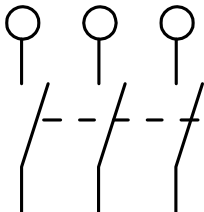


WHEN MOUNTING, ALLOW 4.00/[102] MIN. CLEARANCE BETWEEN ENCLOSURES FOR OPENING OF SIDE HINGED DOOR.

TOP OF NEMA TYPE 3R DEVICES HAVE PROVISIONS FOR MAX 2.50/[64] BOLT-ON HUB.

ALL DIMENSIONS ARE APPROXIMATE. REFER TO TECHNICAL DRAWINGS AND DOCUMENTATION FOR COMPLETE DETAILS.

Wiring Diagram



H324NRB

H364NRB