

Product data sheet

Characteristics

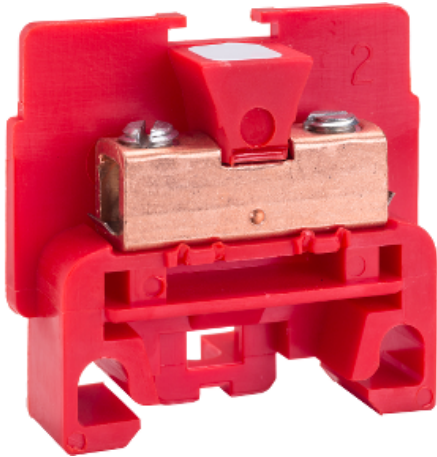
9080GKR6

Terminal block, Linergy, box connector, red colored block, 40A, 600 V

Product availability : Non-Stock - Not normally stocked in distribution facility



Price* : 2.40 USD



Main

Range of product	9080G
Product Type	Terminal block
Localisation on Device	Standard
Color	Red
Quantity	Set of 50

Complementary

Voltage Rating	600 V AC/DC
Current Rating	40 A CSA 70 A UL
Wire Size	AWG 22...AWG 10 copper
Mounting Type	Panel 9080GH track
Certifications	CE CSA file 62144 class 6228 01 UL recognized E60616 CCN XCFR2
Electrical Connection	Copper box lugs
Material	Nylon block
Ambient air temperature for operation	-40...257 °F (-40...125 °C)
Electrical Connrection Tightening Torque	Lug copper 11...12 lbf.in (1.24...1.36 N.m) : AWG 22...AWG 10 copper)
Height	1.39 in (35.31 mm)
Width	1.4 in (35.56 mm)
Depth	0.35 in (8.89 mm)
Density	35 per foot
Compatible End Barrier	GK6B

* Price is "List Price" and may be subject to a trade discount – check with your local distributor or retailer for actual price.

Ordering and shipping details

Category	21702 - 9080 G (NOT GCB)
Discount Schedule	CP5
GTIN	00785901743408
Nbr. of units in pkg.	50
Package weight(Lbs)	0.04 lb(US) (0.02 kg)
Returnability	No
Country of origin	MX

Offer Sustainability

California proposition 65	WARNING: This product can expose you to chemicals including: Lead and lead compounds, which is known to the State of California to cause cancer and birth defects or other reproductive harm. For more information go to www.P65Warnings.ca.gov
REACH Regulation	REACH Declaration
REACH free of SVHC	Yes
EU RoHS Directive	Compliant EU RoHS Declaration
Toxic heavy metal free	Yes
Mercury free	Yes
RoHS exemption information	Yes
China RoHS Regulation	China RoHS declaration Pro-active China RoHS declaration (out of China RoHS legal scope)
PVC free	Yes

Contractual warranty

Warranty	18 months
----------	-----------